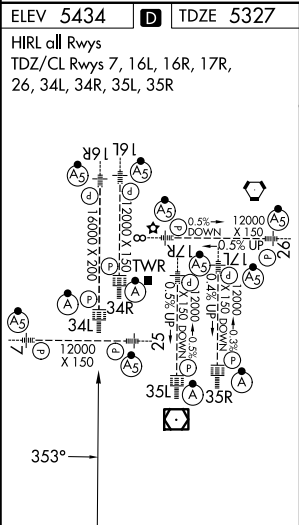
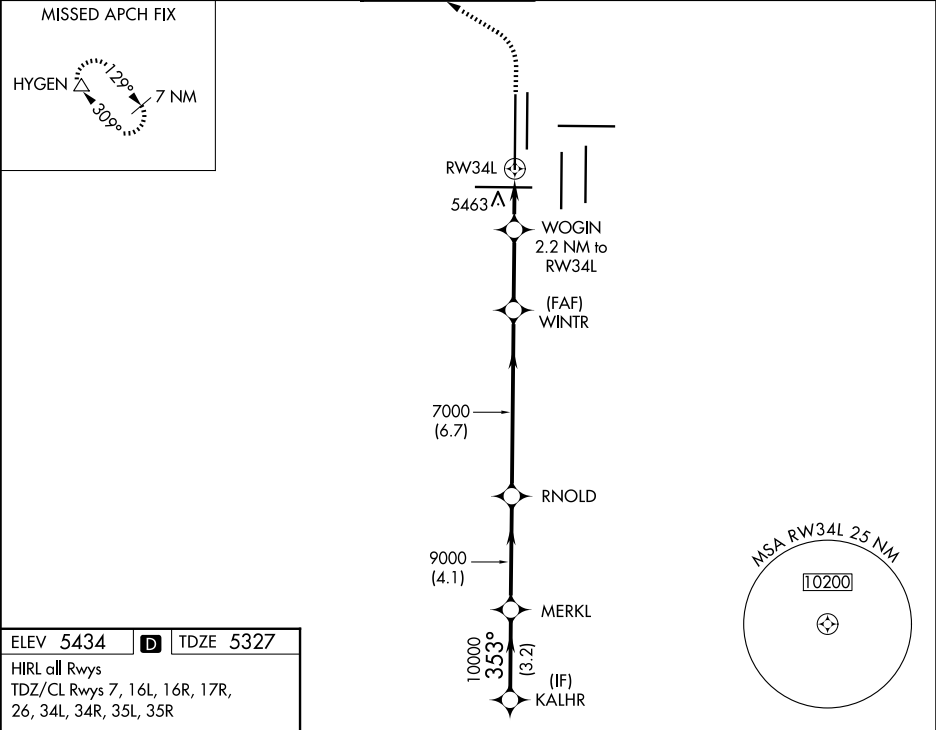


WAAS CH <b>45619</b> <b>W34A</b>	APP CRS <b>353°</b>	Rwy Ldg <b>16000</b> TDZE <b>5327</b> Apt Elev <b>5434</b>
----------------------------------------	------------------------	------------------------------------------------------------------

RNAV (GPS) Y RWY 34L

DENVER INTL (DEN)

RNP APCH-GPS. ⚠ LNAV procedure NA during simultaneous operations. Use of FD or AP required during simultaneous operations. Simultaneous approach authorized with Rwy 35L/R. For uncompensated Baro-VNAV systems, LNAV/VNAV NA below -22°C or above 54°C.			ALSIF-2 	MISSED APPROACH: Climb to 5900 then climbing left turn to 10000 direct HYGEN and hold.	
D-ATIS <b>125.6 379.9</b> (ARR) <b>134.025</b> (DEP)	DENVER APP CON <b>119.3 307.3</b> (N) <b>120.35 379.3</b> (S)	DENVER TOWER <b>135.3 351.95</b>	GND CON <b>121.35 379.175</b> (W) <b>121.85 377.1</b> (E)	CLNC DEL <b>118.75</b>	CPDLC



VGSi and RNAV glidepath not coincident (VGSi Angle 3.00°/TCH 70°).					5900 ↑	10000 ↖	HYGEN △
KALHR	MERKL	RNOLD	WINTR	WOGIN			
10000	353° 10000	9000	7000	2.2 NM to RW34L	1 NM to RW34L	RW34L	
GP 3.00° TCH 50				6060			
3.2 NM		4.1 NM	6.7 NM	2.9 NM	1.2 NM	1 NM	
CATEGORY	A		B		C	D	
LPV DA	5527/18 200 (100-½)						
LNAV/ VNAV DA	5663/26 336 (300-½)						
LNAV MDA	5720/24 393 (300-½)			5720/35 393 (300-⅝)			