

DENVER, COLORADO

AL-9077 (FAA)

25219

WAAS CH 40428 W25A	APP CRS 263°	Rwy Ldg 12000 TDZE 5355 Apt Elev 5434
--	------------------------	--

RNAV (GPS) Y RWY 25
DENVER INTL (DEN)

▼ For uncompensated Baro-VNAV systems, LNAV/VNAV NA below -25°C (-13°F) or above 46°C (116°F). Simultaneous approach authorized with Rwy 26. DME/DME RNP-0.3 NA. Use of FD or AP providing track guidance required during simultaneous operations. LNAV procedure NA during simultaneous operations. For inoperative MALSR, increase LNAV/VNAV all Cais visibility to RVR 4500. # RVR 1800 authorized with use of FD or AP or HUD to DA.

MALSR



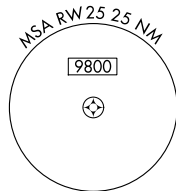
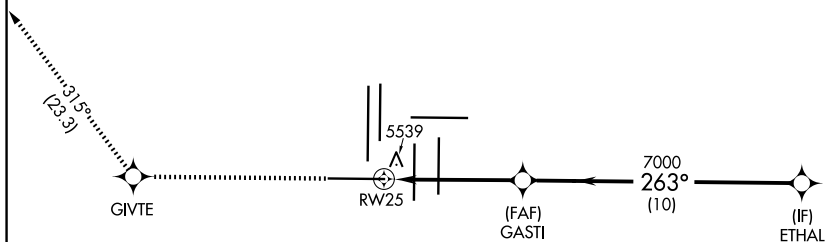
MISSED APPROACH: Climb to 10000 direct GIVTE and on track 315° to HYGEN and hold.

D-ATIS	DENVER APP CON	DENVER TOWER	GND CON	CLNC DEL	CPDLC
125.6 379.9 (ARR)	119.3 307.3 (N)	121.35 379.175 (W)	121.85 377.1 (E)	118.75	
134.025 (DEP)	120.35 379.3 (S)	128.75 273.55			

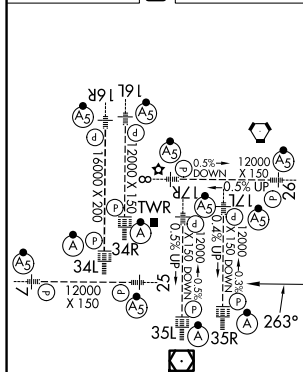
MISSED APCH FIX



RADAR REQUIRED



ELEV 5434	D	TDZE 5355
-----------	----------	-----------



HIRL all Rwys
TDZ/CL Rwys 7, 16L, 16R, 17R,
26, 34L, 34R, 35L, 35R

10000 ↑	GIVTE ✦	fr 315°	HYGEN △	VGSI and RNAV glidepath not coincident (VGSI Angle 3.00/TCH 83).			
*LNAV only				ETHAL 10000			
				GP 3.00° TCH 55			
CATEGORY	A			B		C	
LPV DA#	5555/24			200 (200-½)			
LNAV/ VNAV	5700/30			345 (300-⅝)			
LNAV MDA	5800/24 445 (400-½)			5800/45 445 (400-¾)			

DENVER, COLORADO

Amdt 1B 07DEC17

39°52'N-104°40'W

DENVER INTL (DEN)

RNAV (GPS) Y RWY 25

SW-1, 07 AUG 2025 to 04 SEP 2025