


WAAS CH <b>93529</b> <b>W17B</b>	APP CRS <b>173°</b>	Rwy Ldg <b>12000</b> TDZE <b>5392</b> Apt Elev <b>5434</b>
--	------------------------	--

RNAV (GPS) Y RWY 17R

DENVER INTL (DEN)

**⚠** For uncompensated Baro-VNAV systems, LNAV/VNAV NA below -25°C (-13°F) or above 46°C (116°F). Simultaneous approach authorized with Rwy 16L/16R and 17L. DME/DME RNP-0.3 NA. For inoperative MALS, increase LNAV/VNAV all Cats visibility to 1½ mile, and LNAV Cat C/D to 1½ mile. LNAV procedure NA during simultaneous operations. Use of FD or AP providing RNAV track guidance required during simultaneous operations.

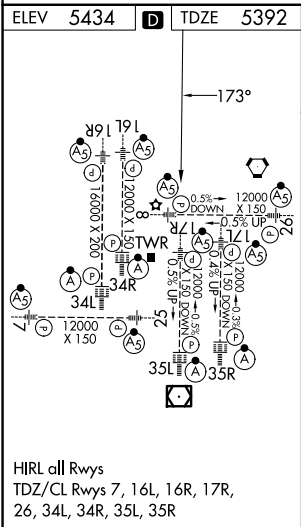
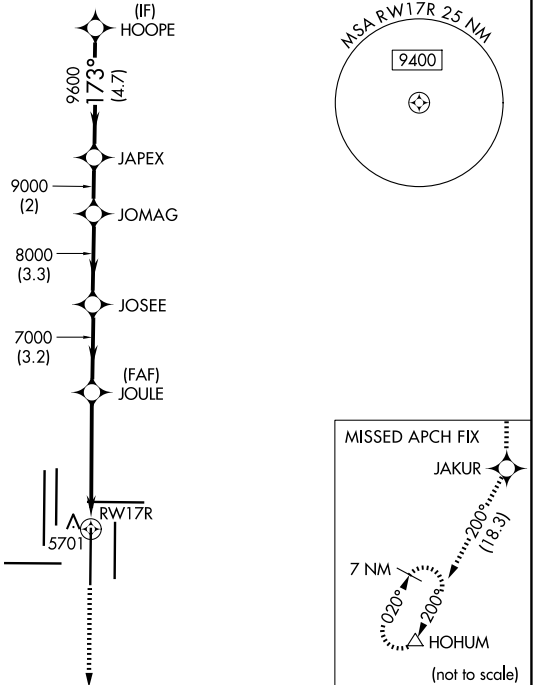
MALS



**MISSED APPROACH:**  
Climb to 10000 direct JAKUR and on track 200° to HOHUM and hold.

D-ATIS <b>125.6 379.9</b> (ARR) <b>134.025</b> (DEP)	DENVER APP CON <b>119.3 307.3</b> (N) <b>120.35 379.3</b> (S)	DENVER TOWER <b>124.3 322.45</b>	GND CON <b>121.35 379.175</b> (W) <b>121.85 377.1</b> (E)	CINC DEL <b>118.75</b>	CPDLC
--	---	-------------------------------------	---	---------------------------	-------

RADAR REQUIRED



10000 ↑	JAKUR ✱	tr 200°	HOHUM △	VGSI and RNAV glidepath not coincident (VGSI Angle 3.00/TCH 69).				
				HOOPER				
*LNAV only				JOULE	JOSEE	JOMAG	JAPEX	11000
*1.6 NM to RW17R				7000	8000	9000	9600	173°
RW17R				7000				GP 3.00° TCH 60
1.6				3.3 NM	3.2 NM	3.3 NM	2 NM	4.7 NM
CATEGORY	A		B		C		D	
LPV DA	5592/18		200 (200-½)					
LNAV/VNAV DA	5857/60		465 (500-1¼)					
LNAV MDA	5940/24		548 (600-½)		5940-1¼		548 (600-1¼)	