

DENVER, COLORADO

AL-9077 (FAA)

25219

WAAS CH 99307 W16A	APP CRS 173°	Rwy Ldg 12000 TDZE 5357 Apt Elev 5434
--	------------------------	--

RNAV (GPS) Y RWY 16L
DENVER INTL (DEN)

▼ For uncompensated Baro-VNAV systems, LNAV/VNAV NA below -25°C (-13°F) or above 45°C (114°F). Simultaneous approach authorized with Rwy 17 L/R. DME/DME RNP -0.3 NA. LNAV procedure NA during simultaneous operations. For inoperative MALS/R, increase LNAV/VNAV all Cats, and LNAV Cats C/D visibility to RVR 4500. Use of FD or AP providing RNAV track guidance required during simultaneous operations.

MALSR

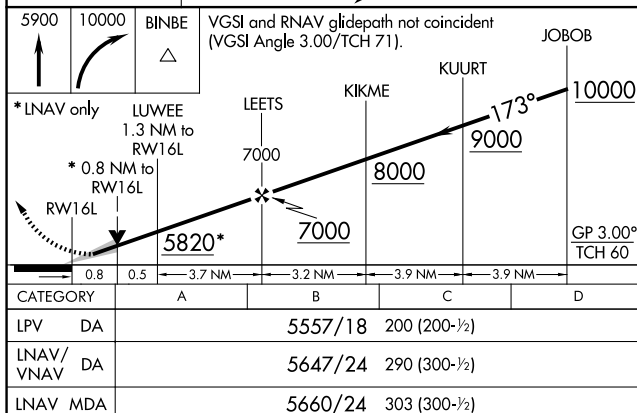


MISSED APPROACH: Climb to 5900 then climbing right turn to 10000 direct BINBE and hold, continue climb-in-hold to 10000.

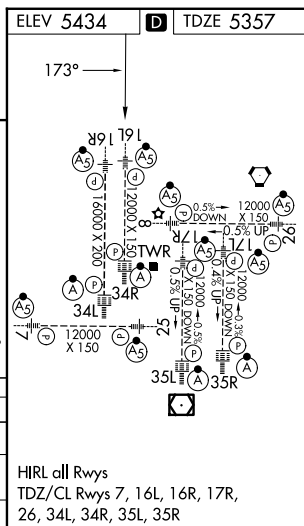
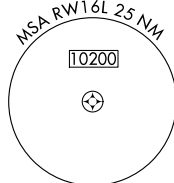
D-ATIS	DENVER APP CON	DENVER TOWER	GND CON	CLNC DEL	CPDLC
125.6 379.9 (ARR)	119.3 307.3 (N)	135.3 351.95	121.35 379.175 (W)	118.75	
134.025 (DEP)	120.35 379.3 (S)		121.85 377.1 (E)		

RADAR REQUIRED

MISSED APCH FIX



CATEGORY	A	B	C	D
LPV DA		5557/18	200 (200-½)	
LNAV/ VNAV DA		5647/24	290 (300-½)	
LNAV MDA		5660/24	303 (300-½)	



DENVER, COLORADO

Amdt 1C 12OCT17

DENVER INTL (DEN)

39°52'N-104°40'W

RNAV (GPS) Y RWY 16L

SW-1, 07 AUG 2025 to 04 SEP 2025