

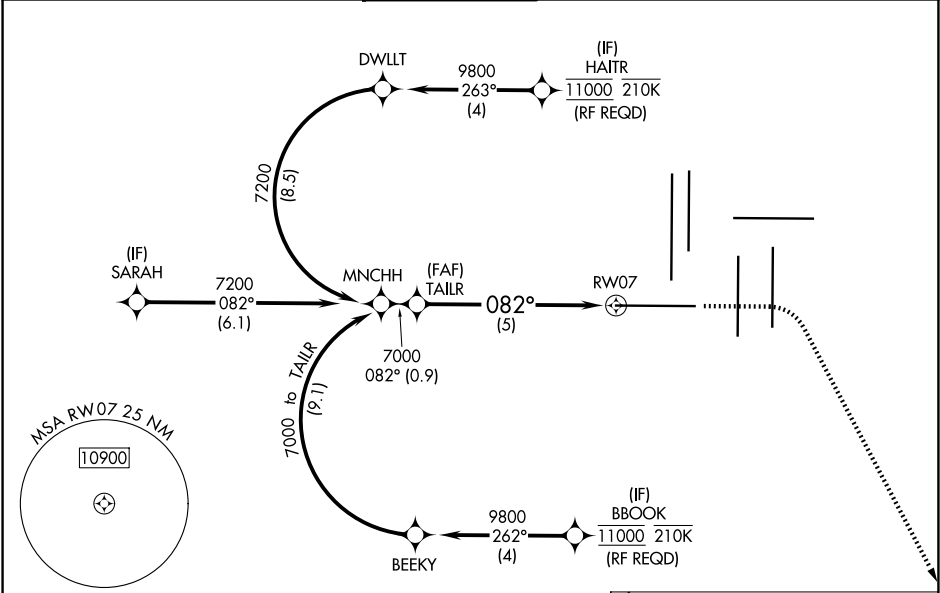
APP CRS	Rwy Ldg	12000
082°	TDZE	5352
	Apt Elev	5434

RNAV (RNP) Z RWY 7

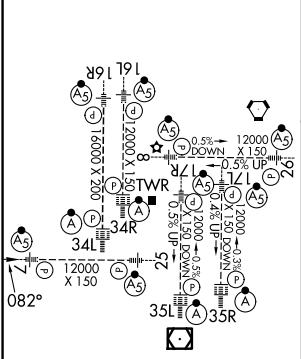
DENVER INTL (DEN)

RNP AR APCH.	MALSR	MISSED APPROACH: Climb to 5900 then climbing right turn to 10000 direct CIDMU and track 081° to LIMEX and hold.
Simultaneous approach authorized. For uncompensated Baro-VNAV systems, procedure NA below -23°C or above 54°C. For inop ALS, increase RNP 0.15 all Cats visibility to RVR 4000, and increase RNP 0.30 all Cats visibility to RVR 6000.		

D-ATIS	DENVER APP CON	DENVER TOWER	GND CON	CLNC DEL	CPDLC
125.6 379.9 (ARR) 134.025 (DEP)	119.3 307.3 (N) 120.35 379.3 (S)	128.75 273.55	121.35 379.175 (W) 121.85 377.1 (E)	118.75	



ELEV 5434	D	TDZE 5352
-----------	---	-----------



HIRL all Rwys
TDZ/CL Rwys 7, 16L, 16R, 17R,
26, 34L, 34R, 35L, 35R

<p>MISSED APCH FIX</p> <p>CIDMU</p> <p>081° (27.7)</p> <p>LIMEX</p> <p>081°</p> <p>261°</p> <p>(not to scale) 7 NM</p>									
<p>TAILR</p> <p>7000</p> <p><u>7000</u></p> <p>082°</p> <p>5 NM</p> <p>RWY07</p> <p>GP 3.00° TCH 55</p> <p>See planview for multiple IF locations.</p> <p>VGSI and RNAV glidepath not coincident (VGSI Angle 3.00/TCH 68).</p>	<table><tr><td>5900</td><td>10000</td><td>CIDMU</td><td>LIMEX</td></tr><tr><td>↑</td><td>↘</td><td>✧</td><td>tr 081° △</td></tr></table>	5900	10000	CIDMU	LIMEX	↑	↘	✧	tr 081° △
5900	10000	CIDMU	LIMEX						
↑	↘	✧	tr 081° △						
CATEGORY	A	B	C	D					
RNP 0.15 DA	5602/24 250 (200-½)								
RNP 0.30 DA	5753/40 401 (400-¾)								
AUTHORIZATION REQUIRED									

SW-1, 07 AUG 2025 to 04 SEP 2025

SW-1, 07 AUG 2025 to 04 SEP 2025