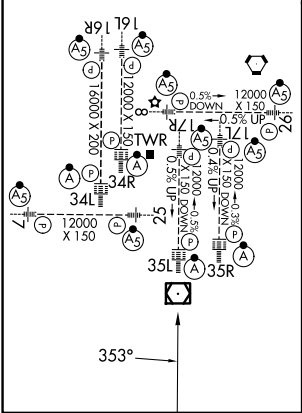
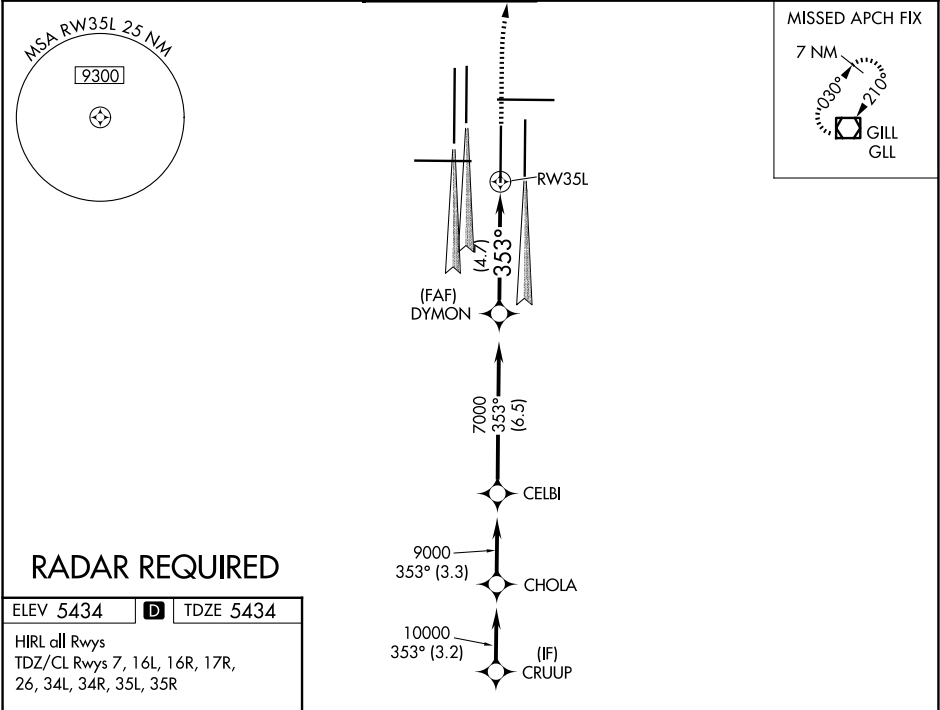




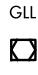
APP CRS	Rwy Ldg	12000
353°	TDZE	5434
	Apt Elev	5434

RNAV (RNP) Z RWY 35L  
DENVER INTL (DEN)

<p><b>⚠</b> For uncompensated Baro-VNAV systems, procedure NA below -25°C (-13°F) or above 46°C (115°F). GPS required. For inoperative ALSF, increase RNP 0.10 all Cots visibility to RVR 4500 and RNP 0.30 all Cots visibility to RVR 5000. Simultaneous approach authorized. Use of FD or AP providing RNAV track guidance required during simultaneous operations.</p>	<p>ALSF-2</p> <p></p>	<p>MISSED APPROACH: Climb to 10000, then right turn direct GLL VOR/DME and hold.</p>
---	-----------------------	--

D-ATIS 125.6 379.9 (ARR) 134.025 (DEP)	DENVER APP CON 119.3 307.3 (N) 120.35 379.3 (S)	DENVER TOWER 124.3 322.45	GND CON 121.35 379.175 (W) 121.85 377.1 (E)	CLNC DEL 118.75	CPDLC
--	---	------------------------------	---	--------------------	-------



DYMON		VGSI and RNAV glidepath not coincident (VGSI Angle 3.00/TCH 71).		10000			GLL	
7000		7000		353°		RW35L		
GP 3.00° TCH 57		4.7 NM						
CATEGORY	A	B	C	D				
RNP 0.10 DA	5695/24		261 (300-½)					
RNP 0.30 DA	5760/32		326 (400-¾)					
AUTHORIZATION REQUIRED								

SW-1, 07 AUG 2025 to 04 SEP 2025

SW-1, 07 AUG 2025 to 04 SEP 2025