

APP CRS	Rwy Ldg	12000
353°	TDZE	5354
	Apt Elev	5434

RNAV (RNP) Z RWY 34R

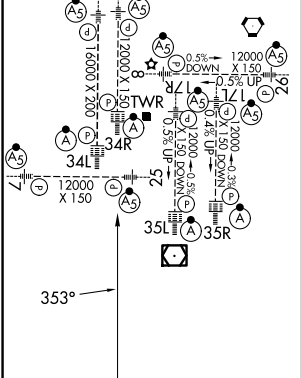
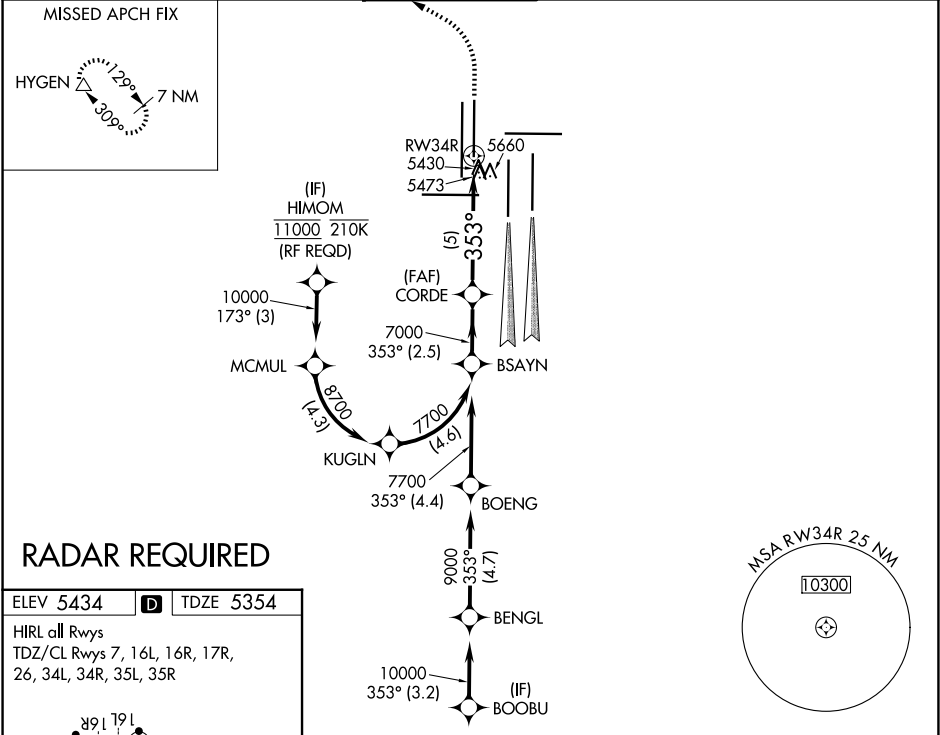
DENVER INTL (DEN)

⚠ For uncompensated Baro-VNAV systems, procedure NA below -25°C (-13°F) or above 46°C (114°F). GPS required. For inoperative ALSF, increase RNP 0.10 all Cats visibility to RVR 6000 and RNP 0.20 all Cats visibility to 1½ mile and RNP 0.30 all Cats visibility to 2¼ mile. Simultaneous approach authorized. Use of FD or AP providing RNAV track guidance required during simultaneous operations.

ALSF-2

MISSED APPROACH:
Climb to 6000 then climbing left turn to 10000 direct HYGEN and hold.

D-ATIS 125.6 379.9 (ARR) 134.025 (DEP)	DENVER APP CON 119.3 307.3 (N) 120.35 379.3 (S)	DENVER TOWER 135.3 351.95	GND CON 121.35 379.175 (W) 121.85 377.1 (E)	CLNC DEL 118.75	CPDLC
--	---	-------------------------------------	---	---------------------------	-------



VGSi and RNAV glidepath not coincident
 (VGSi Angle 3.00°/TCH 63).

6000

10000

HYGEn

BSAYN
 CORDE
 7700
 353°
 7000
 GP 3.00°
 TCH 59
 2.5 NM
 5 NM
 RW34R

See planview for multiple IF locations.

CATEGORY	A	B	C	D
RNP 0.10 DA	5739/40	385 (400-¾)		
RNP 0.20 DA	5849/60	495 (500-1¼)		
RNP 0.30 DA	5980-1 ½	626 (600-1½)		

AUTHORIZATION REQUIRED

SW-1, 07 AUG 2025 to 04 SEP 2025

SW-1, 07 AUG 2025 to 04 SEP 2025