

APP CRS
353°

Rwy Ldg
TDZE
Apt Elev

16000
5327
5434

RNAV (RNP) Z RWY 34L

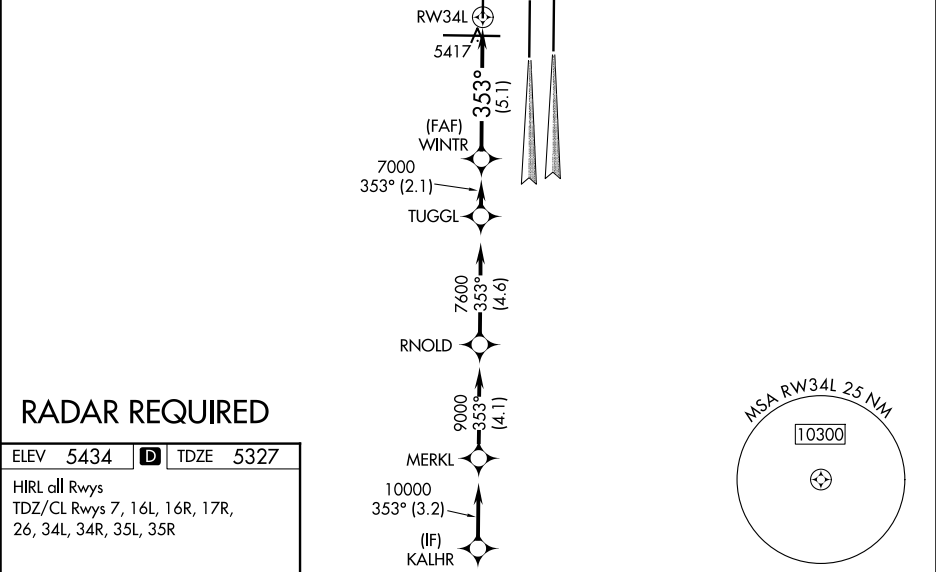
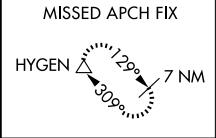
DENVER INTL (DEN)

For uncompensated Baro-VNAV systems, procedure NA below -25°C (-13°F) or above 48°C (118°F). GPS required. For inoperative ALSF, increase RNP 0.10 all Cats visibility to RVR 4500 and RNP 0.20 all Cats visibility to RVR 6000 and RNP 0.30 all Cats visibility to 1½ mile. Simultaneous approach authorized. Use of FD or AP providing RNAV track guidance required during simultaneous operations.

ALSF-2

MISSED APPROACH: Climb to 5900 then climbing left turn to 10000 direct HYGEM and hold.

D-ATIS 125.6 379.9 (ARR) 134.025 (DEP)	DENVER APP CON 119.3 307.3 (N) 120.35 379.3 (S)	DENVER TOWER 135.3 351.95	GND CON 121.35 379.175 (W) 121.85 377.1 (E)	CLNC DEL 118.75	CPDLC
--	---	------------------------------	---	--------------------	-------



RADAR REQUIRED

ELEV 5434 D TDZE 5327

HIRL all Rwys
TDZ/CL Rwys 7, 16L, 16R, 17R,
26, 34L, 34R, 35L, 35R

WINTR	VGSi and RNAV glidepath not coincident (VGSi Angle 3.00/TCH 70).	5900	10000	HYGEM
7000	353°			
GP 3.00° TCH 50	5.1 NM			
CATEGORY	A	B	C	D
RNP 0.10 DA	5587/24	260 (200-½)		
RNP 0.20 DA	5720/45	393 (300-¾)		
RNP 0.30 DA	5782/60	455 (400-1¼)		

AUTHORIZATION REQUIRED

SW-1, 07 AUG 2025 to 04 SEP 2025

SW-1, 07 AUG 2025 to 04 SEP 2025