

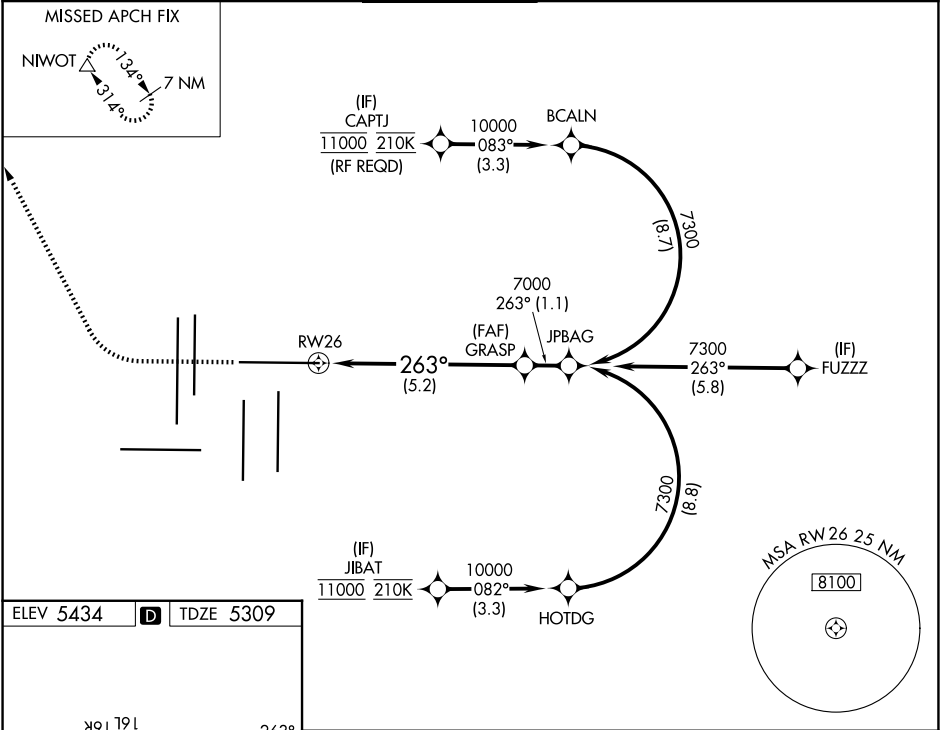
APP CRS	Rwy Ldg	12000
263°	TDZE	5309
	Apt Elev	5434

RNAV (RNP) Z RWY 26

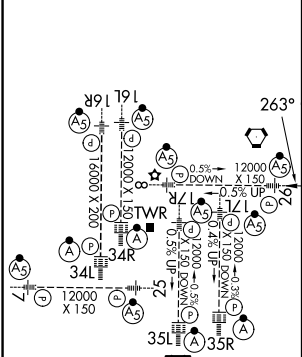
DENVER INTL (DEN)

RNP AR APCH.	MALSR	MISSED APPROACH: Climb to 6000 then climbing right turn to 10000 direct NIWOT and hold.
<p>Simultaneous approach authorized. For uncompensated Baro-VNAV systems, procedure NA below -23°C or above 54°C. For inop ALS, increase RNP 0.15 all Cats visibility to RVR 4000, and increase RNP 0.30 all Cats visibility to RVR 4500.</p>		

D-ATIS 125.6 379.9 (ARR) 134.025 (DEP)	DENVER APP CON 119.3 307.3 (N) 120.35 379.3 (S)	DENVER TOWER 132.35 239.275	GND CON 121.35 379.175 (W) 121.85 377.1 (E)	CLNC DEL 118.75	CPDLC
--	---	--------------------------------	---	--------------------	-------



ELEV 5434	D	TDZE 5309
-----------	---	-----------



HIRL all Rwys
TDZ/CL Rwys 7, 16L, 16R, 17R,
26, 34L, 34R, 35L, 35R

6000	10000	NIWOT	GRASP	7000
VGSi and RNAV glidepath not coincident (VGSi Angle 3.00/TCH 70).				
RW26 263° 7000 GP 3.00° TCH 55				
See planview for multiple IF locations.				
5.2 NM				
CATEGORY	A	B	C	D
RNP 0.15 DA	5566/24 257 (200-½)			
RNP 0.30 DA	5611/24 302 (200-½)			
AUTHORIZATION REQUIRED				

SW-1, 07 AUG 2025 to 04 SEP 2025

SW-1, 07 AUG 2025 to 04 SEP 2025