


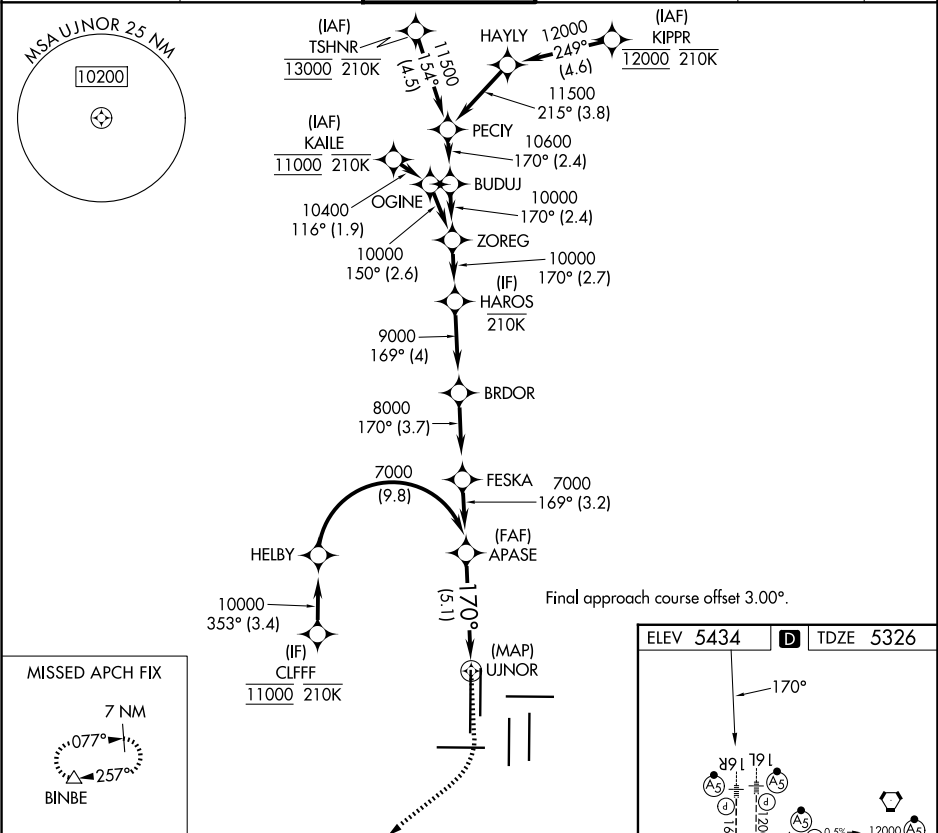
APP CRS  
170°

Rwy Ldg  
TDZE  
5326  
Apt Elev  
5434

RNAV (RNP) Z RWY 16R

DENVER INTL (DEN)

|   |   |   |  |                           |       |
|---|---|---|--|---------------------------|-------|
| RNP AR APCH - GPS.  |   | <div>MALSR</div> <div></div> | MISSED APPROACH: Climb to 5900 then climbing right turn to 10000 direct BINBE and hold, continue climb-in-hold to 10000. |                           |       |
| ▼ For uncompensated Baro-VNAV systems, procedure NA below -25°C or above 54°C. Simultaneous approach authorized. For inop ALS, increase RNP 0.30 all Cats visibility to RVR 4500. |   |   |  |                           |       |
| D-ATIS<br><b>125.6 379.9</b> (ARR)<br><b>134.025</b> (DEP)  | DENVER APP CON<br><b>119.3 307.3</b> (N)<br><b>120.35 379.3</b> (S) | DENVER TOWER<br><b>135.3 351.95</b>   | GND CON<br><b>121.35 379.175</b> (W)<br><b>121.85 377.1</b> (E)  | CLNC DEL<br><b>118.75</b> | CPDLC |



APASE 7000

VGSI and RNAV glidepath not coincident (VGSI Angle 3.00/TCH 71).

5900 10000

BINBE

7000

GP 3.00°  
TCH 55

170°

See planview for multiple IF locations.

5.1 NM

UJNOR

|             |                     |   |   |   |
|-------------|---------------------|---|---|---|
| CATEGORY    | A                   | B | C | D |
| RNP 0.30 DA | 5597/24 271 (200-½) |   |   |   |

AUTHORIZATION REQUIRED

HIRL all Rwys  
TDZ/CL Rwys 7, 16L, 16R, 17R,  
26, 34L, 34R, 35L, 35R