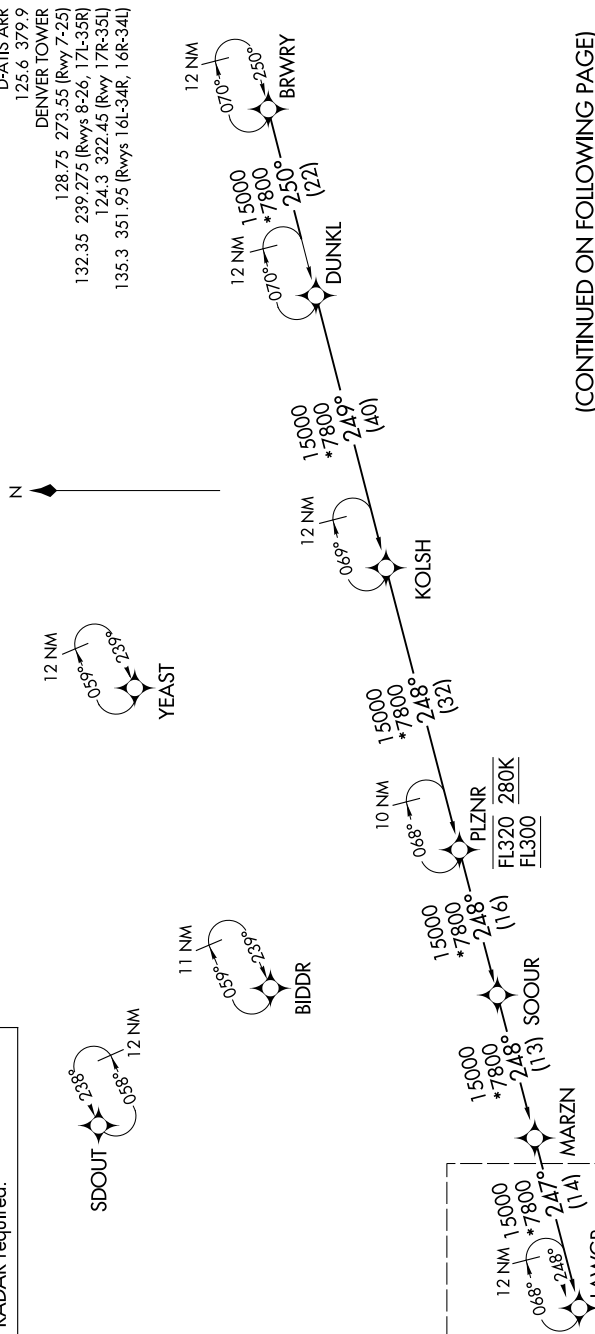


LAWGR FOUR ARRIVAL (RNAV) Transition Routes

DENVER, COLORADO
DENVER INTL (DEN)

DENVER APP CON
124.95 346.4
D-ATIS ARR
125.6 379.9
DENVER TOWER
128.75 273.55 (Rwy 7-25)
132.35 239.275 (Rwys 8-26, 17L-35R)
124.3 322.45 (Rwy 17R-35L)
35.3 351.95 (Rwys 16L-34R, 16R-34L)



(CONTINUED ON FOLLOWING PAGE)

BWRVY TRANSITION (BWRVY.LAWGR4)
DUNKL TRANSITION (DUNKL.LAWGR4)
KOLSH TRANSITION (KOLSH.LAWGR4)
MARZN TRANSITION (MARZN.LAWGR4)
PLZNR TRANSITION (PLZNR.LAWGR4)
SOOUR TRANSITION (SOOUR.LAWGR4)

NOTE: Jet aircraft only.
NOTE: Denver Center will issue "descend via" clearance and landing direction.
NOTE: DUNKL, KOLSH, PLZNR, SOOUR, MARZN, and LAWGR Transitions, ATC assigned only.
NOTE: Expect runway assignment on initial contact with Denver TRACON.
NOTE: Landing north select Rwy 35R Transition.
NOTE: Landing south select Rwy 17R Transition.
NOTE: Landing east select Rwy 7 Transition.
NOTE: Landing west select Rwy 26 Transition.

NOTE: Chart not to scale.

SW-1, 07 AUG 2025 to 04 SEP 2025