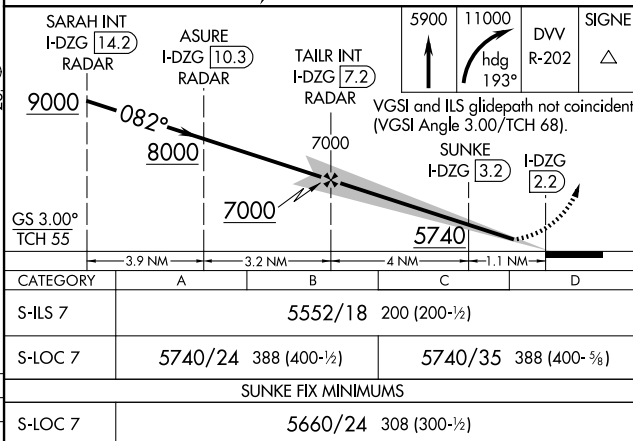
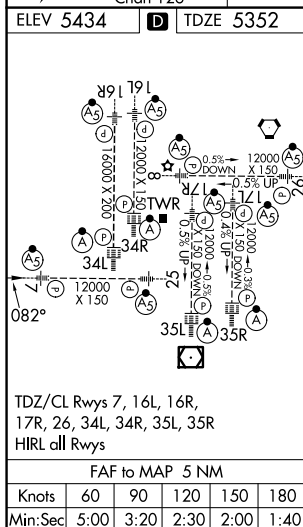
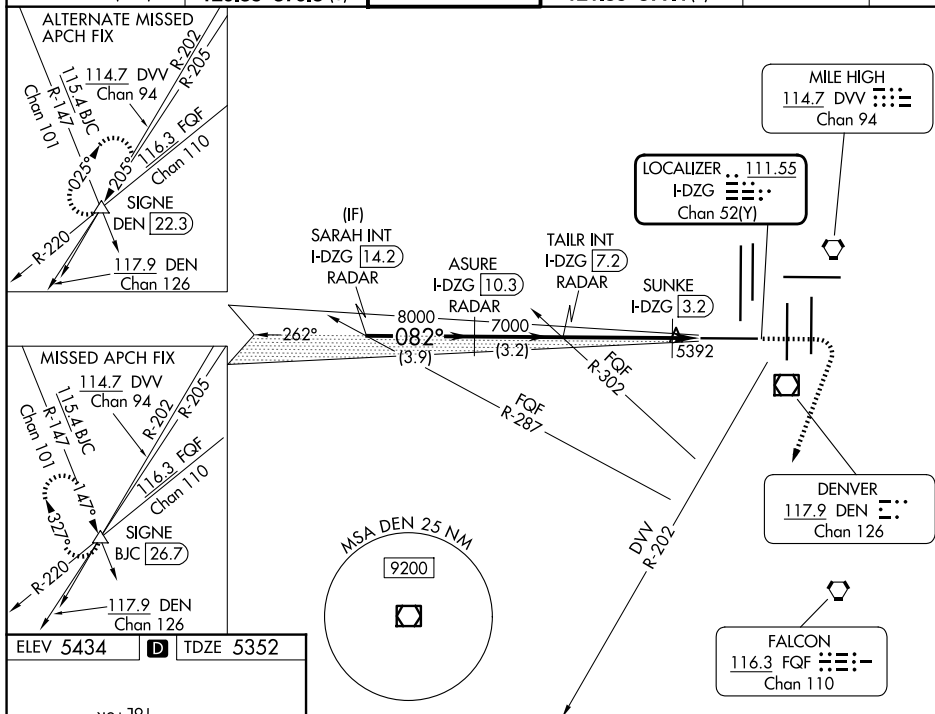


ILS or LOC RWY 7
DENVER INTL (DEN)

MISSED APPROACH: Climb to 5900 then climbing right turn to 11000 on heading 193° and on DVV VORTAC R-202 to SIGNE INT/BJC 26.7 DME and hold. Continue climb-in-hold to 11000.

CPD/C



SW-1, 07 AUG 2025 to 04 SEP 2025