
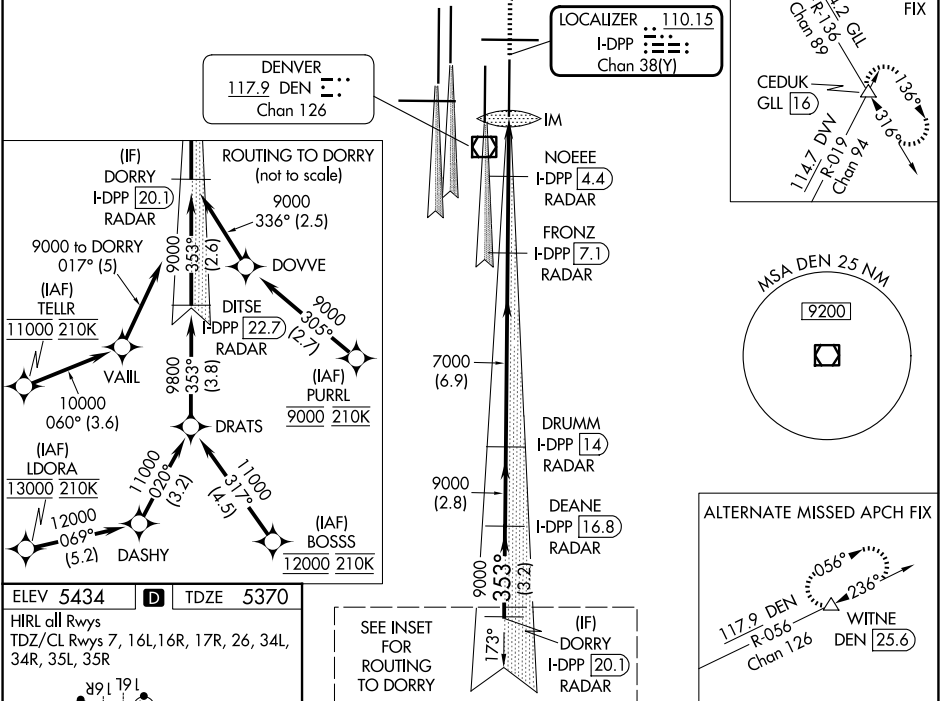


LOC/DME I-DPP <b>110.15</b> Chan <b>38(Y)</b>	APP CRS <b>353°</b>	Rwy Ldg TDZE Apt Elev <b>12000</b> <b>5370</b> <b>5434</b>
---	------------------------	---

ILS or LOC RWY 35R  
DENVER INTL (DEN)

<b>T</b>	S-LOC 35R DME or RADAR required. Simultaneous approach authorized with Rwy 34L, Rwy 34R, and Rwy 35L.	ALSF-2 	MISSED APPROACH: Climb to 5800 then climbing right turn to 10000 on heading 048° and on GLL VORTAC R-136 to CEDUK/GLL 16 DME and hold.			
D-ATIS <b>125.6 379.9</b> (ARR) <b>134.025</b> (DEP)	DENVER APP CON <b>119.3 307.3</b> (N) <b>120.35 379.3</b> (S)	DENVER TOWER <b>132.35 239.275</b>	GND CON <b>121.35 379.175</b> (W) <b>121.85 377.1</b> (E)	CLNC DEL <b>118.75</b>	CPDLC	

RADAR or GPS REQUIRED



ELEV 5434	<b>D</b>	TDZE 5370
HIRL all Rwy TDZ/CL Rwy 7, 16L, 16R, 17R, 26, 34L, 34R, 35L, 35R		
VGSi and ILS glidepath not coincident (VGSi Angle 3.00/TCH 66).		
CATEGORY A B C D		
S-ILS 35R 5570/18 200 (200-½)		
S-LOC 35R 5740/24 370 (400-½) 5740/35 370 (400-¾)		

SW-1, 07 AUG 2025 to 04 SEP 2025

SW-1, 07 AUG 2025 to 04 SEP 2025