

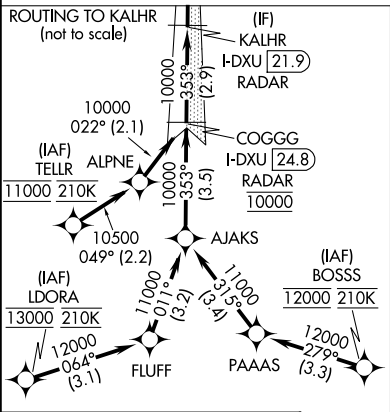
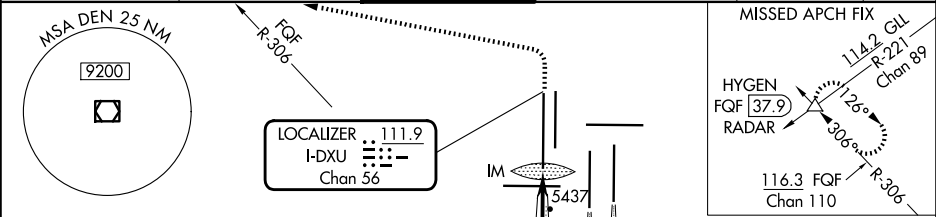
LOC/DME I-DXU 111.9 Chan 56	APP CRS 353°	Rwy Ldg TDZE 16000 5327 Apt Elev 5434
---	------------------------	---

ILS or LOC RWY 34L

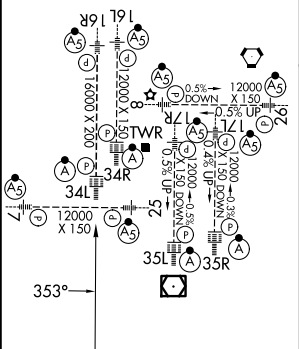
DENVER INTL (DEN)

RNAV-1 GPS or RADAR required for procedure entry. From LDORA, BOSSS, TELLR: RNAV-1 GPS required. DME or RADAR required.	ALSF-2 	MISSED APPROACH: Climb to 5800 then climbing left turn to 10000 on heading 270° and FQF VORTAC R-306 to HYGEN/FQF 37.9 DME/RADAR and hold.
Simultaneous approach authorized with Rwy 35L/R. For inop ALS, increase S-LOC Cat C and D visibility to RVR 5500.		

D-ATIS 125.6 379.9 (ARR) 134.025 (DEP)	DENVER APP CON 119.3 307.3 (N) 120.35 379.3 (S)	DENVER TOWER 135.3 351.95	GND CON 121.35 379.175 (W) 121.85 377.1 (E)	CLNC DEL 118.75	CPDLC
--	---	-------------------------------------	---	---------------------------	-------



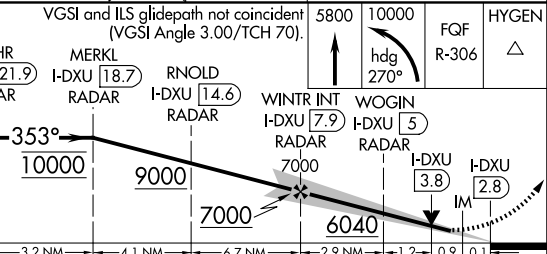
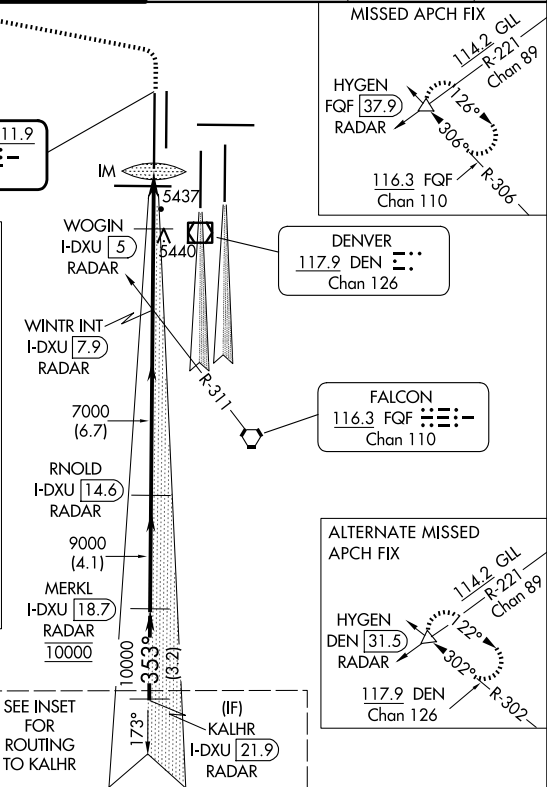
ELEV 5434	D	TDZE 5327
HIRL all Rwys		
TDZ/CL Rlys 7, 16L, 16R, 17R, 26, 34L, 34R, 35L, 35R		



FAF to MAP 5.1 NM					
Knots	60	90	120	150	180
Min:Sec	5:06	3:24	2:33	2:02	1:42

DENVER, COLORADO

Amdt 2C 07OCT21



CATEGORY	A	B	C	D
S-ILS 34L	5527/18 200 (100-½)			
S-LOC 34L	5700/24 373 (300-½)		5700/35 373 (300-¾)	

DENVER INTL (DEN)

ILS or LOC RWY 34L

SW-1, 07 AUG 2025 to 04 SEP 2025

SW-1, 07 AUG 2025 to 04 SEP 2025