

LOC/DME I-AQD <u>108.5</u> Chn 22	APP CRS 353°	Rwy Ldg 12000 TDZE 5434 Apt Elev 5434
---	------------------------	--

ILS RWY 35L (SA CAT I)
DENVER INTL (DEN)

RNAV 1-GPS or RADAR required for procedure entry.

T Simultaneous approach authorized. Requires specific OPSPEC, MSPEC, or LOA approval and use of HUD to DH.

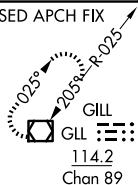
ALSF-2



MISSED APPROACH: Climb to 10000 then right turn direct GLL VOR/DME and hold.

D-ATIS	DENVER APP CON	DENVER TOWER	GND CON	CLNC DEL	CPDLC
125.6 379.9 (ARR)	119.3 307.3 (N)	124.3 322.45	121.35 379.175 (W)	118.75	
134.025 (DEP)	120.35 379.3 (S)		121.85 377.1 (E)		

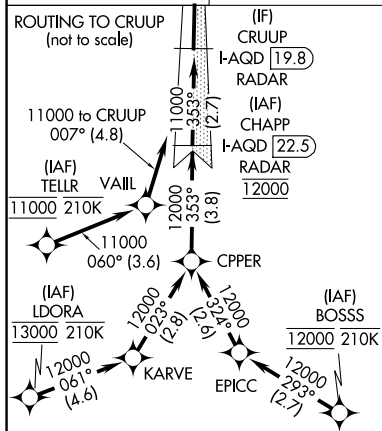
MISSED APCH FIX



LOCALIZER 108.5
I-AQD
Chan 22

DENVER
117.9 DEN
Chan 126

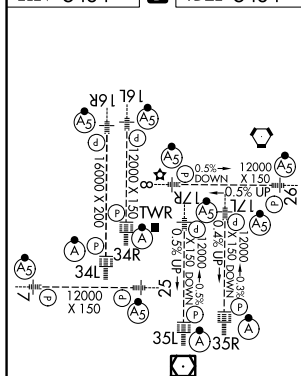
ROUTING TO CRUUP
(not to scale)



ELEV 5434

D

TDZE 5434



HIRL all Rwy's
TDZ/CL Rwy's 7, 16L, 16R, 17R, 26, 34L,
34R, 35L, 35R

DENVER, COLORADO

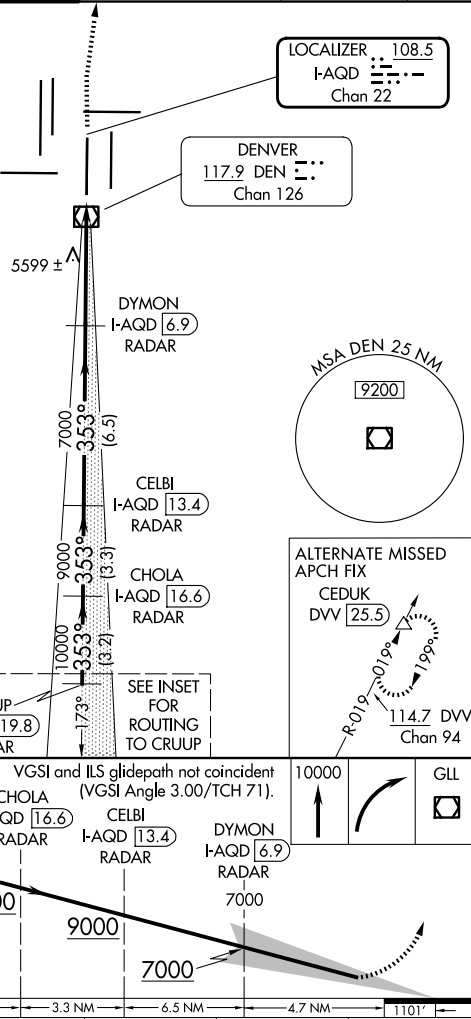
Amdt 5B 19JUL18

39°52'N-104°40'W

DENVER INTL (DEN)

ILS RWY 35L (SA CAT I)

SA CATEGORY I ILS - SPECIAL AIRCREW
& AIRCRAFT CERTIFICATION REQUIRED



ALTERNATE MISSED
APCH FIX
CEDUK

DW 25.5
R-019
114.7 DW
Chan 94

(IF)
CRUUP
I-AQD 19.8
RADAR

SEE INSET
FOR
ROUTING
TO CRUUP

173°

CRUUP VGSI and ILS glidepath not coincident
LAOD 19.9 CHOLA (VGSI Angle 3.00/TCH 71).

CATEGORY	A	B	C	D
S-ILS 35L	RA 165/14 150 DA 5584			

SA CATEGORY I ILS - SPECIAL AIRCREW
& AIRCRAFT CERTIFICATION REQUIRED

SW-1, 07 AUG 2025 to 04 SEP 2025

SW-1, 07 AUG 2025 to 04 SEP 2025