

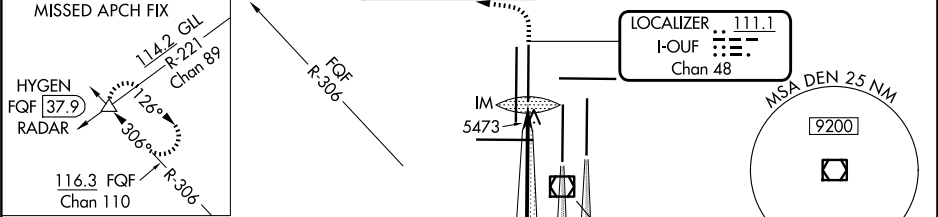
LOC/DME I-OUF <b>111.1</b> Chan <b>48</b>	APP CRS <b>353°</b>	Rwy Ldg <b>12000</b> TDZE <b>5354</b> Apt Elev <b>5434</b>	ILS RWY 34R (CAT II & III) DENVER INTL (DEN)
---	------------------------	--	---

Simultaneous approach authorized with Rwy 35L/R.  
CAT II: RVR 1000 authorized with specific OPSPEC, MSPEC  
or LOA approval and use of autoland or HUD to touchdown.

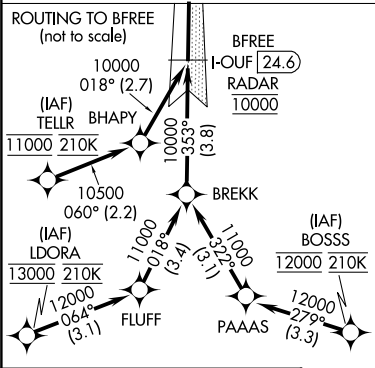
ALSF-2

MISSED APPROACH: Climb to 5800 then dimbling left  
turn to 10000 on heading 270° and on FQF VORTAC  
R-306 to HYGEN/FQF 37.9 DME/RADAR and hold.

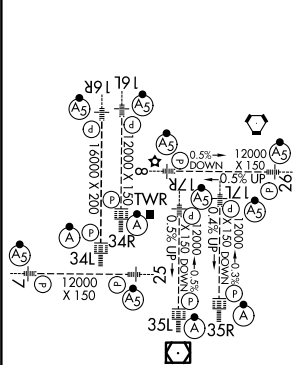
D-ATIS <b>125.6 379.9</b> (ARR) <b>134.025</b> (DEP)	DENVER APP CON <b>119.3 307.3</b> (N) <b>120.35 379.3</b> (S)	DENVER TOWER <b>135.3 351.95</b>	GND CON <b>121.35 379.175</b> (W) <b>121.85 377.1</b> (E)	CLNC DEL <b>118.75</b>	CPDLC
--	---	-------------------------------------	---	---------------------------	-------



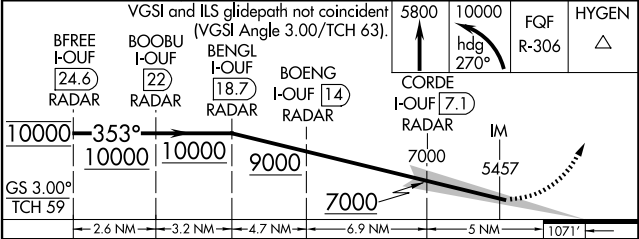
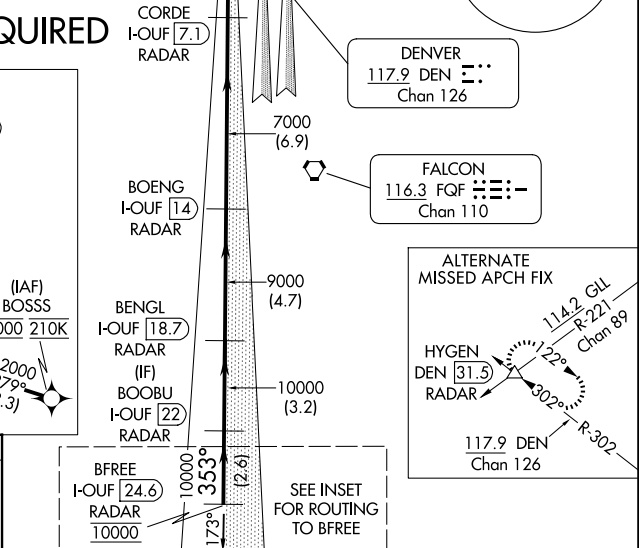
RADAR or GPS REQUIRED



ELEV 5434	<b>D</b>	TDZE 5354
-----------	----------	-----------



HIRL all Rwy  
TDZ/CL Rwy 7, 16L, 16R, 17R, 26, 34L,  
34R, 35L, 35R



CATEGORY	A	B	C	D
S-ILS 34R		CAT II RA 155/12	100	DA 5454
S-ILS 34R		CAT IIIa	RVR 07	
S-ILS 34R		CAT IIIb	RVR 03	
S-ILS 34R		CAT IIIc	NA	

CATEGORY II & III ILS - SPECIAL AIRCREW  
& AIRCRAFT CERTIFICATION REQUIRED