

ILS RWY 34L (SA CAT I)
DENVER INTL (DEN)

MISSED APPROACH: Climb to 5800 then climbing left turn to 10000 on heading 270° and FQF VORTAC R-306 to HYGEN/FQF 37.9 DME/RADAR and hold.

MSA DEN 25 NM

9200

LOCALIZER
I-DXU
Chan 56

111.9

IM

116.3 FQF
Chan 110

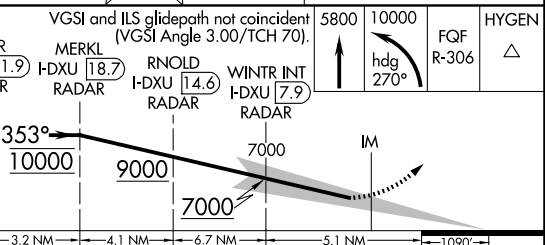
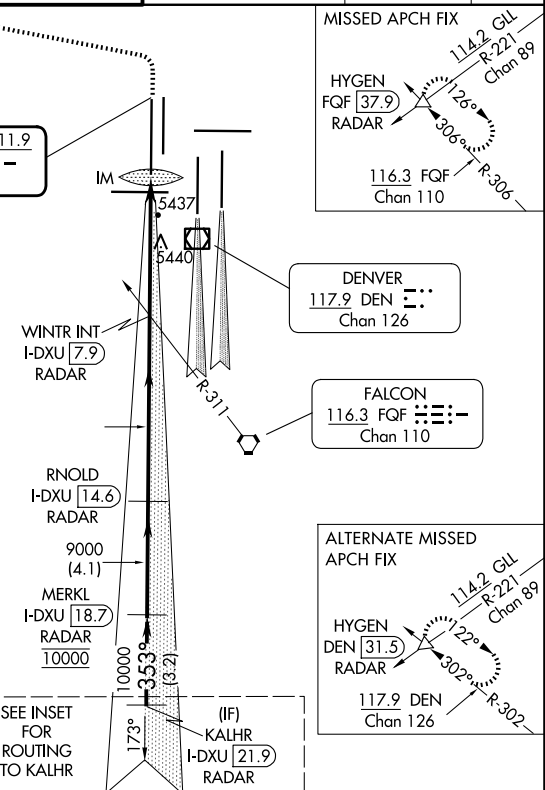
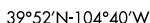
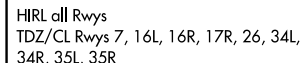
114.2 GIL
R-221
Chan 89

HYGEN
FQF 37.9
RADAR

126°

300°

R-306



SA CATEGORY I ILS - SPECIAL AIRCREW
& AIRCRAFT CERTIFICATION REQUIRED

ILS RWY 34L (SA CAT I)