


LOC/DME I-DXU 111.9 Chan 56	APP CRS 353°	Rwy Ldg 16000 TDZE 5327 Apt Elev 5434
---	------------------------	--

ILS RWY 34L (CAT II & III)
DENVER INTL (DEN)

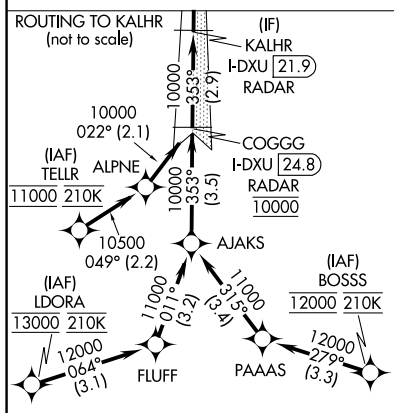
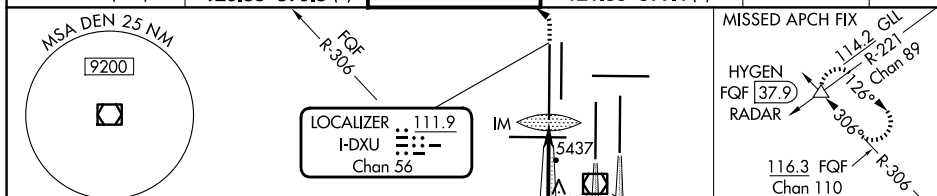
RNAV-1 GPS or RADAR required for procedure entry. From LDORA, BOSSS, TELLR: RNAV-1 GPS required. DME or RADAR required.

T CAT II: RVR 1000 authorized with specific OPSPEC, MSPEC, or LOA approval and use of autoland or HUD to touchdown. Simultaneous approach authorized with Rwy 35L/R.

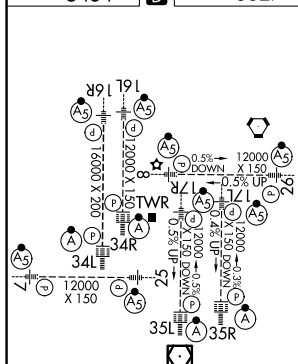
ALSF-2

 climbing left turn to 10000 on heading 270°
and FQF VORTAC R-306 to HYGEN/FQF 37.9
DME/RADAR and hold.

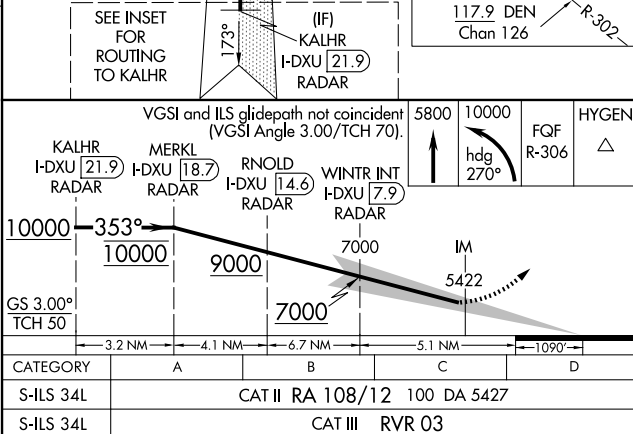
D-ATIS	DENVER APP CON	DENVER TOWER	GND CON	CLNC DEL	CPDLC
125.6 379.9 (ARR)	119.3 307.3 (N)	135.3 351.95	121.35 379.175 (W)	118.75	
134.025 (DEP)	120.35 379.3 (S)		121.85 377.1 (E)		



ELEV 5434	D	TDZE 5327
-----------	----------	-----------



HIRL all Rwy's
TDZ/CL Rwy's 7, 16L, 16R, 17R, 26, 34L,
34R, 35L, 35R



CATEGORY II & III ILS - SPECIAL AIRCREW
& AIRCRAFT CERTIFICATION REQUIRED

ILS RWY 34I (CAT II & III)