

HHOTH TWO DEPARTURE (RNAV)

AL-9077 (FAA)

DENVER INTL (DEN)
DENVER, COLORADO

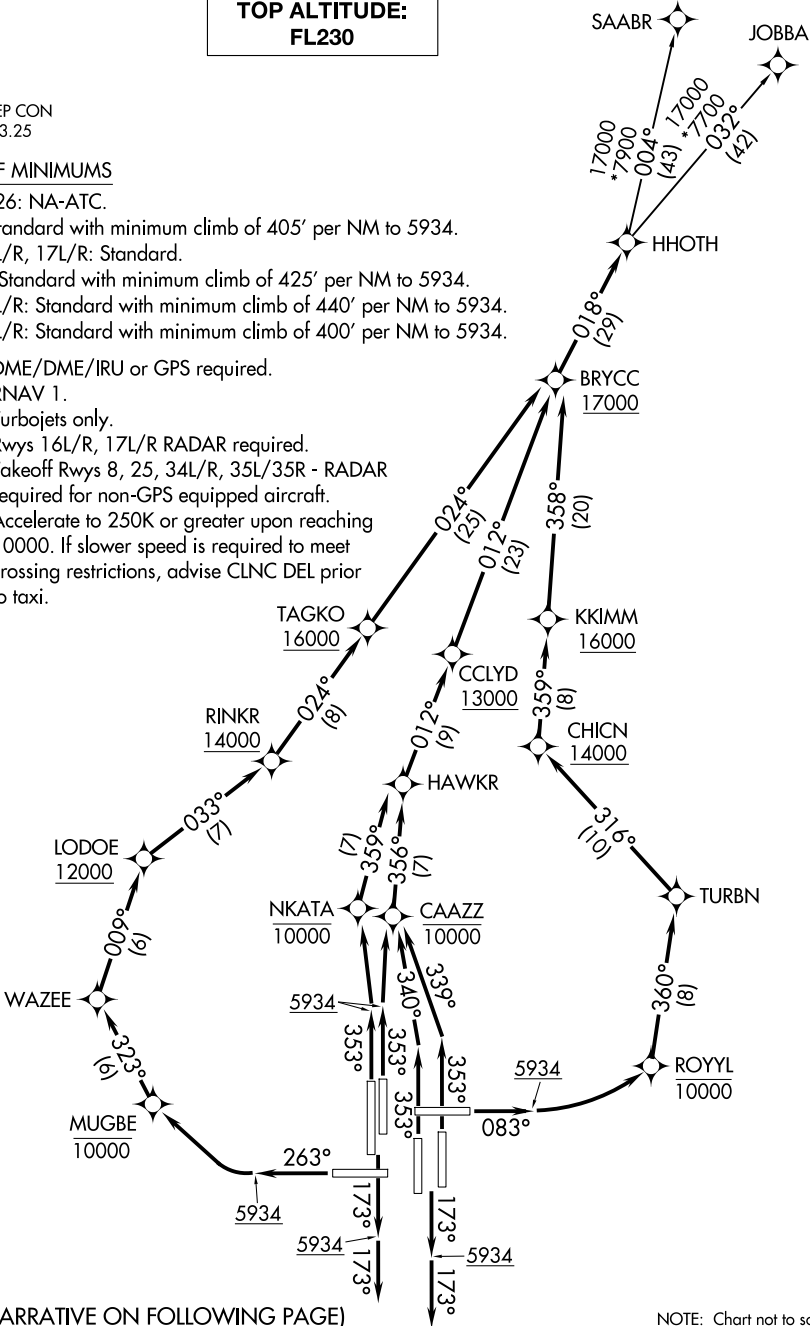
D-ATIS DEP
134.025
CLNC DEL
118.75
CPDLC
DENVER DEP CON
127.05 363.25

TOP ALTITUDE:
FL230

TAKEOFF MINIMUMS

- Rwys 7, 26: NA-ATC.
- Rwy 8: Standard with minimum climb of 405' per NM to 5934.
- Rwys 16L/R, 17L/R: Standard.
- Rwy 25: Standard with minimum climb of 425' per NM to 5934.
- Rwys 34L/R: Standard with minimum climb of 440' per NM to 5934.
- Rwys 35L/R: Standard with minimum climb of 400' per NM to 5934.

- NOTE: DME/DME/IRU or GPS required.
- NOTE: RNAV 1.
- NOTE: Turbojets only.
- NOTE: Rwys 16L/R, 17L/R RADAR required.
- NOTE: Takeoff Rwys 8, 25, 34L/R, 35L/35R - RADAR required for non-GPS equipped aircraft.
- NOTE: Accelerate to 250K or greater upon reaching 10000. If slower speed is required to meet crossing restrictions, advise CLNC DEL prior to taxi.



(NARRATIVE ON FOLLOWING PAGE)

NOTE: Chart not to scale.

HHOTH TWO DEPARTURE (RNAV)

(HHOTH2.HHOTH) 10SEP20

DENVER, COLORADO
DENVER INTL (DEN)