

NOTE: DME/DME/IRU or GPS required.

NOTE: RNAV 1.

NOTE: Turbojets only.

NOTE: Takeoff Rwys 16L/R, 17L/R, 34L/R, 35L/R - RADAR required

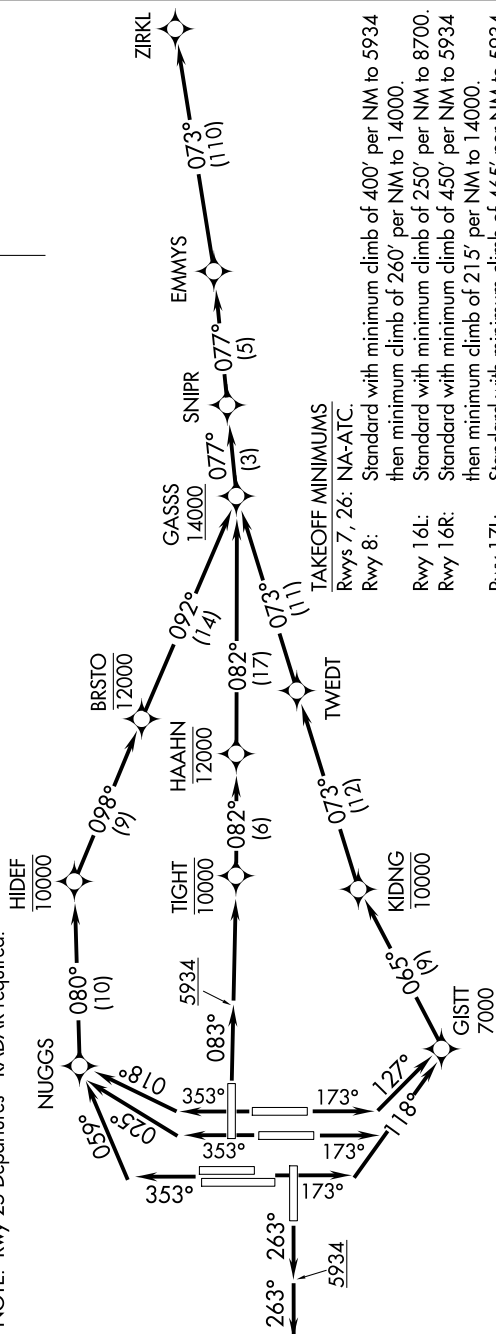
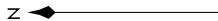
for non-GPS equipped aircraft.

NOTE: Accelerate to 250K or greater upon reaching 10000. If slower speed is required to meet crossing restrictions advise CLNC DEL prior to taxi.

NOTE: Rwy 25 Departures - RADAR required.

TOP ALTITUDE:
FL230

D-ATIS DEP	134.025
CLINC DEL	118.75
CPDLC	
DENVER DEP CON	128.25 371.95



TAKEOFF MINIMUMS

Rwys 7. 26: NA-ATC.

Rwy 8: Standard

then minin

Row 16: Standard

Rwy 16R. Standard.

then minim

Standard 171.

then minimize

Standard
Pwv 17B.

than minim

(NARRATIVE ON FOLLOWING PAGE)

NOTE: Chart not to scale.

SW-1, 07 AUG 2025 to 04 SEP 2025

EMMYS EIGHT DEPARTURE (RNAV)

(EMMYS8.ZIRKL) 17JUN21

DENVER, COLORADO

DENVER INTL (DEN)