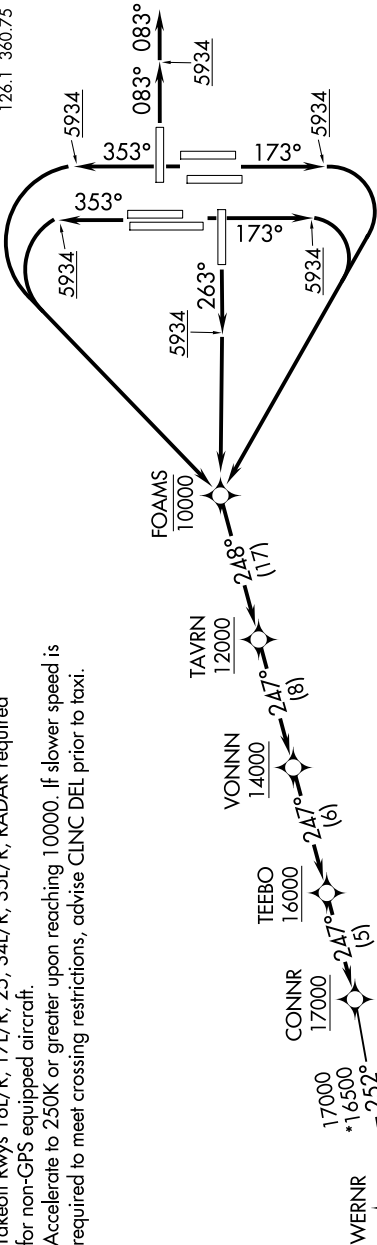


SW-1, 07 AUG 2025 to 04 SEP 2025

D-ATIS DEP  
134.025  
CINCL DEL  
118.75  
CPDLC  
DENVER DEP CON  
126.1 360.75

TOP ALTITUDE:  
FL230

NOTE: DME/DME/IRU or GPS required.  
NOTE: RNAV 1.  
NOTE: Turbojets only.  
NOTE: Takeoff Rwy 8 RADAR required.  
NOTE: Takeoff Rws 16L/R, 17L/R, 25, 34L/R, 35L/R, RADAR required  
for non-GPS equipped aircraft.  
NOTE: Accelerate to 250K or greater upon reaching 10000. If slower speed is  
required to meet crossing restrictions, advise CINCL DEL prior to taxi.



✧ ZAKRY

TAKEOFF MINIMUMS

Rwys 7, 26: NA - ATC.  
Rwy 8: Standard.  
Rwy 16L: Standard with minimum climb 425' per NM to 5934, then minimum climb of 210' per NM to 16000.  
Rwy 16R: Standard with minimum climb 420' per NM to 5934, then minimum climb of 250' per NM to 16000.  
Rwy 17L: Standard with minimum climb 450' per NM to 5934.  
Rwy 17R: Standard with minimum climb 460' per NM to 5934, then minimum climb of 205' per NM to 16000.  
Rwy 25: Standard with minimum climb 400' per NM to 5934, then minimum climb of 225' per NM to 16000.  
Rwys 34L/R: Standard with minimum climb 400' per NM to 5934, then minimum climb of 210' per NM to 16000.  
Rwys 35L/R: Standard with minimum climb 400' per NM to 5934.

(NARRATIVE ON FOLLOWING PAGE)

NOTE: Chart not to scale.

SW-1, 07 AUG 2025 to 04 SEP 2025