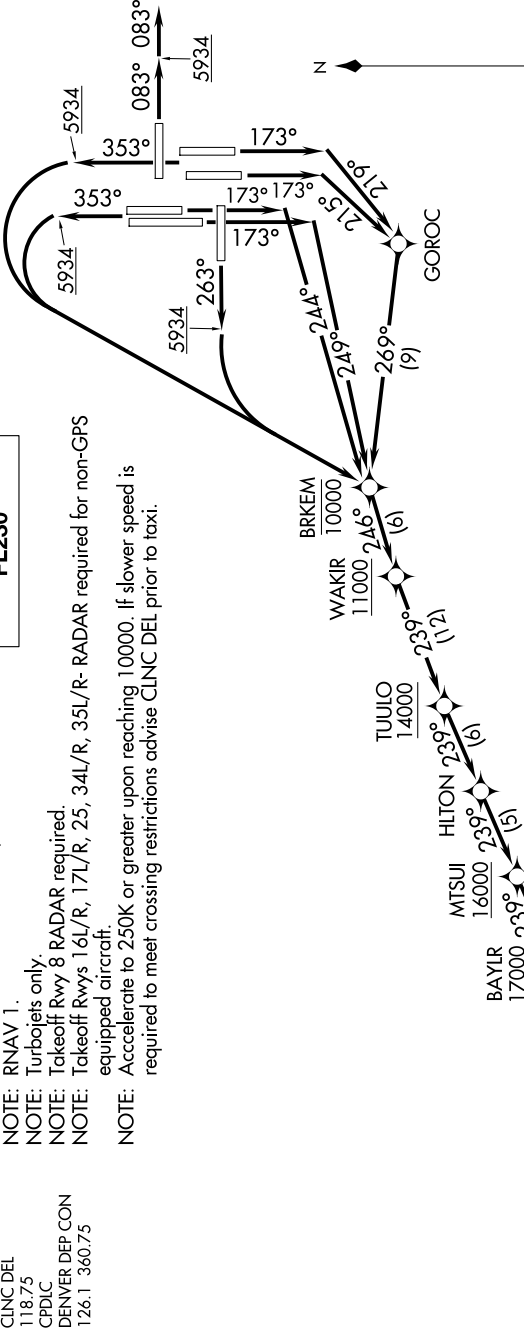


SW-1, 07 AUG 2025 to 04 SEP 2025

D-ATIS DEP
134.025
CLNC DEL
118.75
CPDIC
DENVER DEP CON
126.1 360.75

TOP ALTITUDE:
FL230

- NOTE: DME/DME/IRU or GPS required.
NOTE: RNAV 1.
NOTE: Turbojets only.
NOTE: Takeoff Rwy 8 RADAR required.
NOTE: Takeoff Rwys 16L/R, 17L/R, 25, 34L/R, 35L/R- RADAR required for non-GPS equipped aircraft.
NOTE: Accelerate to 250K or greater upon reaching 10000. If slower speed is required to meet crossing restrictions advise CLNC DEL prior to taxi.



TAKEOFF MINIMUMS
Rwys 7, 26: NA - ATC.
Rwy 8: Standard.

- Rwy 16L: Standard with minimum climb of 425' per NM to 5934, then minimum climb of 230' per NM to 16500.
Rwy 16R: Standard with minimum climb of 420' per NM to 5934, then minimum climb of 235' per NM to 16500.
Rwy 17L: Standard with minimum climb of 450' per NM to 5934, then minimum climb of 225' per NM to 16500.
Rwy 17R: Standard with minimum climb of 460' per NM to 5934, then minimum climb of 230' per NM to 16500.
Rwy 25: Standard with minimum climb of 410' per NM to 5934, then minimum climb of 245' per NM to 16500.
Rwys 34L/R: Standard with minimum climb of 400' per NM to 5934, then minimum climb of 230' per NM to 16500.
Rwys 35L/R: Standard with minimum climb of 400' per NM to 5934, then minimum climb of 225' per NM to 16500.

(NARRATIVE ON FOLLOWING PAGE)

NOTE: Chart not to scale.

SW-1, 07 AUG 2025 to 04 SEP 2025