

DENVER, COLORADO

128.75 273.55 (Rwy 7-25)
132.35 239.275 (Rwys 8-26, 17L-35R)
124.3 322.45 (Rwy 17R-35L)
135.3 351.95 (Rwys 16L-34R, 16R-34L)

NOTE: BBOTL, FOAMM, MALTE, CAASK AALLE,

BIDDER, HOPPER, MILK, SOUT and YEAST
Transitions, ATC assigned only.

NOTE: Denver Center will issue "descend via" clearance and landing direction.

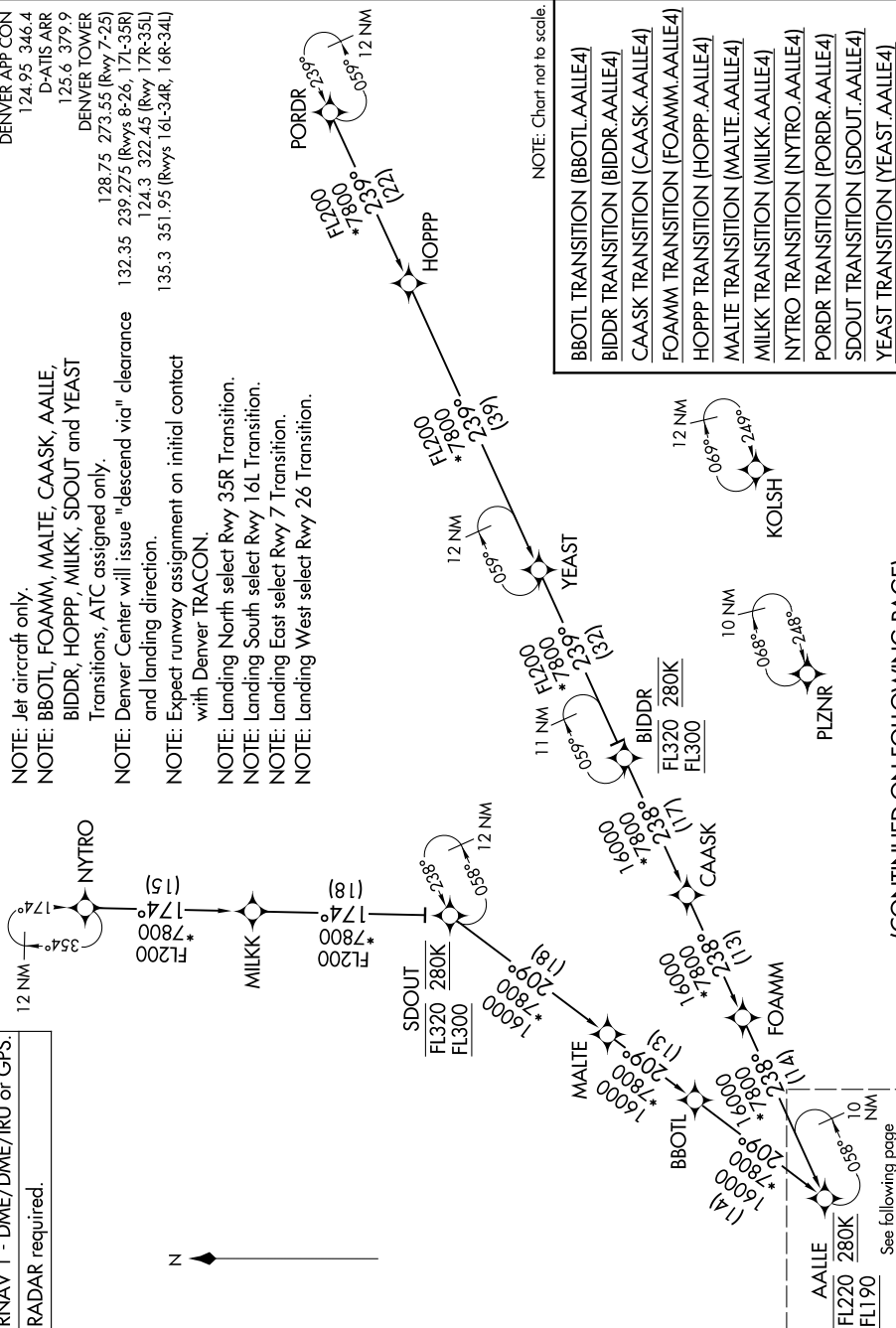
NOTE: Expect runway assignment on initial contact with Denver TRACON.

NOTE: Landing North select Rwy 35R Transition.

NOTE: Landing South select Rwy 16L Transition.

NOTE: Landing East select Rwy 7 Transition.

NOTE: Landing West select Rwy 26 Transition.



NOTE: Chart not to scale.

BBOTL TRANSITION (BBOTL.AALLE4)

BIDDR TRANSITION (BIDDR.AALF4)

CASAK TRANSITION (CAASK AALIEA)

CHASSK TRANSITION (CHASSK:AALEET#)/
EQAMM TRANSITION (EQAMM:AALEET#)

FOAM TRANSITION (FOAM-AALL)

HOPPP TRANSITION (HOPPP.AALLE4)

MALTE TRANSITION (MALTE.AALLE4)

MILKK TRANSITION (MILKK.AALLE4)

NYTRO TRANSITION (NYTRO.AALLE4)

PORDR TRANSITION (PORDR.AALLE4)

SDQ IT TRANSITION (SDQ IT A11E4)

WYEAST TRANSITION (YEAST VALUE)

(CONTINUED ON FOLLOWING PAGE)

SW-1, 07 AUG 2025 to 04 SEP 2025

DENVER, COLORADO
DENVER INTL (DEN)

(AALLE.AALLE4) 12JUN25