

WAAS CH 53746 W13A	APP CRS 132°	Rwy Idg 5600 TDZE 4234 Apt Elev 4234
--	------------------------	---

RNAV (GPS) RWY 13

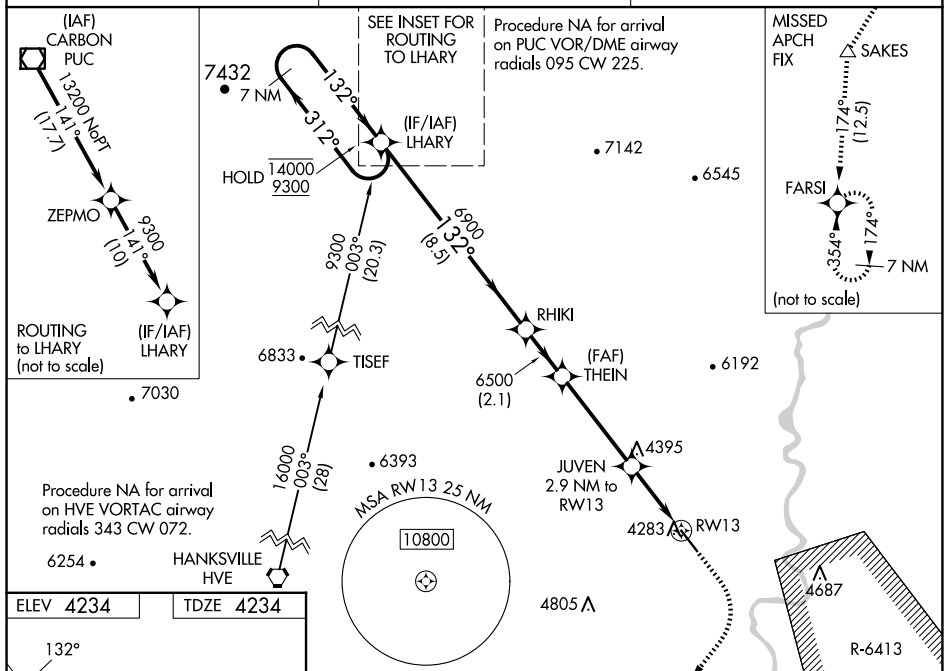
GREEN RIVER MUNI (U34)

RNP APCH - GPS.

T Rwy 13 helicopter visibility reduction below $\frac{3}{4}$ SM NA. Use Moab altimeter setting; when not received, use Hanksville altimeter setting and increase LPV DA to 4603 feet; increase LNAV/VNAV DA to 4603 feet; increase all MDAs 20 feet and LNAV visibility Cat C/D $\frac{1}{8}$ SM, and Circling visibility Cat D $\frac{1}{4}$ SM. Baro-VNAV NA. Circling NA for Cats C and D northeast of Rwy 13-31.

MISSED APPROACH: Climb to 4800, then climbing right turn to 8000 direct SAKES and on 174° track to FARSI and hold.

CNY ASOS 118.525	SALT LAKE CENTER 133.6 269.25	UNICOM 122.8 (CTAF) ①
----------------------------	---	---------------------------------



CATEGORY	A	B	C	D
LPV DA	4588-1	354 (400-1)		
LNAV/VNAV DA	4588-1	354 (400-1)		
LNAV MDA	4640-1	406 (500-1)	4640-1 $\frac{1}{8}$	406 (500-1 $\frac{1}{8}$)
CIRCLING	4800-1 566 (600-1)	4840-1 606 (700-1)	4840-1 $\frac{3}{4}$ 606 (700-1 $\frac{3}{4}$)	5100-2 $\frac{3}{4}$ 866 (900-2 $\frac{3}{4}$)