

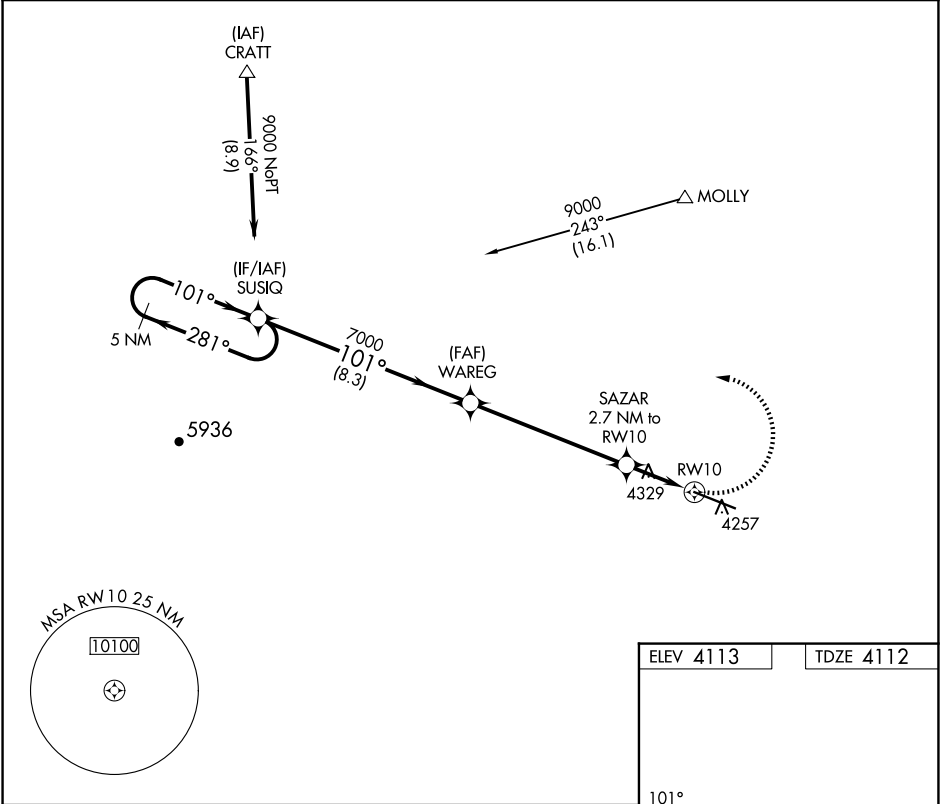
APP CRS	Rwy Idg	9550
101°	TDZE	4112
	Apt Elev	4113

RNAV (GPS) RWY 10

DONA ANA COUNTY INTL JETPORT (DNA)

<div><div><div>▼</div><div>NA</div></div><div>DME/DME RNP-0.3 NA. When local altimeter setting not received, use El Paso Intl altimeter setting.</div></div> <div>MISSED APPROACH: Climbing left turn to 9000 direct SUSIQ and hold.</div>
--

AWOS-3PT 124.175	EL PASO APP CON 119.15	AUNICOM 122.725 (CTAF) 0
---------------------	---------------------------	-----------------------------



5 NM Holding Pattern		9000		SUSIQ	
281°		101°		101°	
9000		7000		5000	
8.3 NM		6.1 NM		2.7 NM	
CATEGORY	A	B	C	D	
LNAV MDA	4700-1	588 (600-1)	4700-1¾	588 (600-1¾)	
CIRCLING	4760-1	647 (700-1)	4760-1¾	4760-2	
			647 (700-¾)	647 (700-2)	
					MIRL Rwy 10-28 0 REIL Rwy 10 and 28 0