

25163

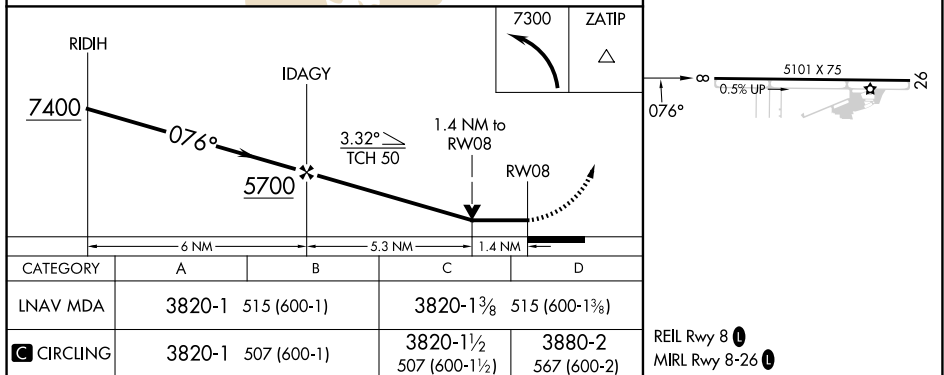
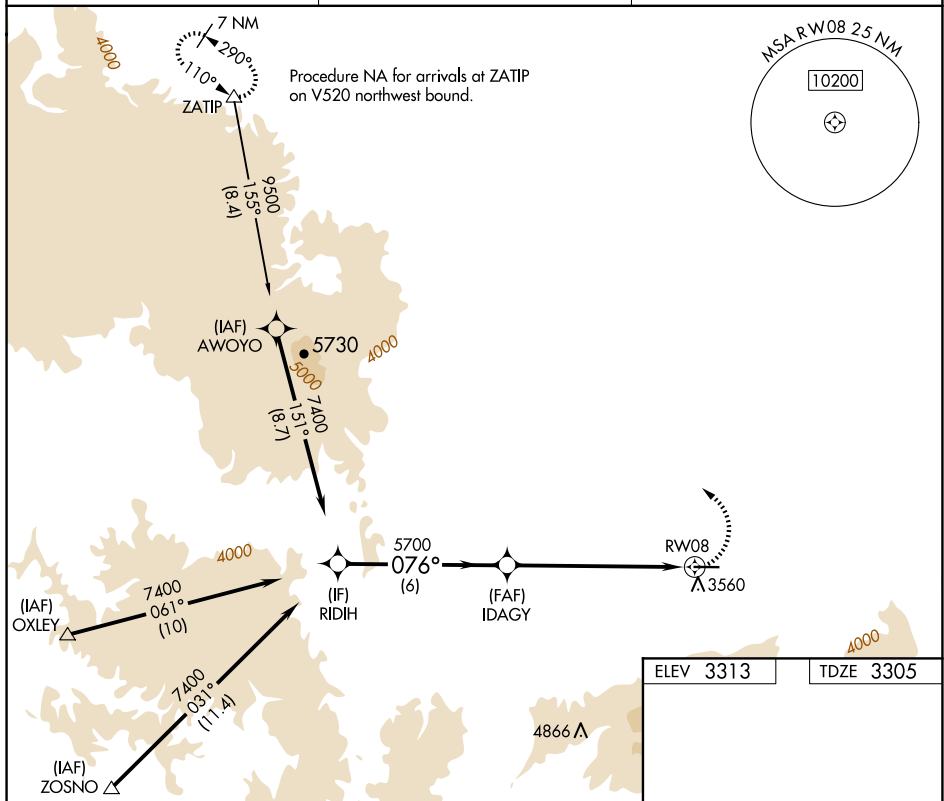
RNAV (GPS) RWY 8

MISSED APPROACH: Climbing left turn to 7300 direct ZATIP and hold.

T Rwy 8 helicopter visibility reduction below $\frac{3}{4}$ SM NA.
A Circling NA south of Rwy 8-26.

AWOS-3
118.175

SEATTLE CENTER
123.95 290.55

CTAF
122.8 L

IDAHO COUNTY (GIC)
RNAV (GPS) RWY 8

NW-1, 07 AUG 2025 to 04 SEP 2025