


APP CRS	Rwy Ldg	5101
239°	TDZE	3313
	Apt Elev	3313

# RNAV (GPS) RWY 26

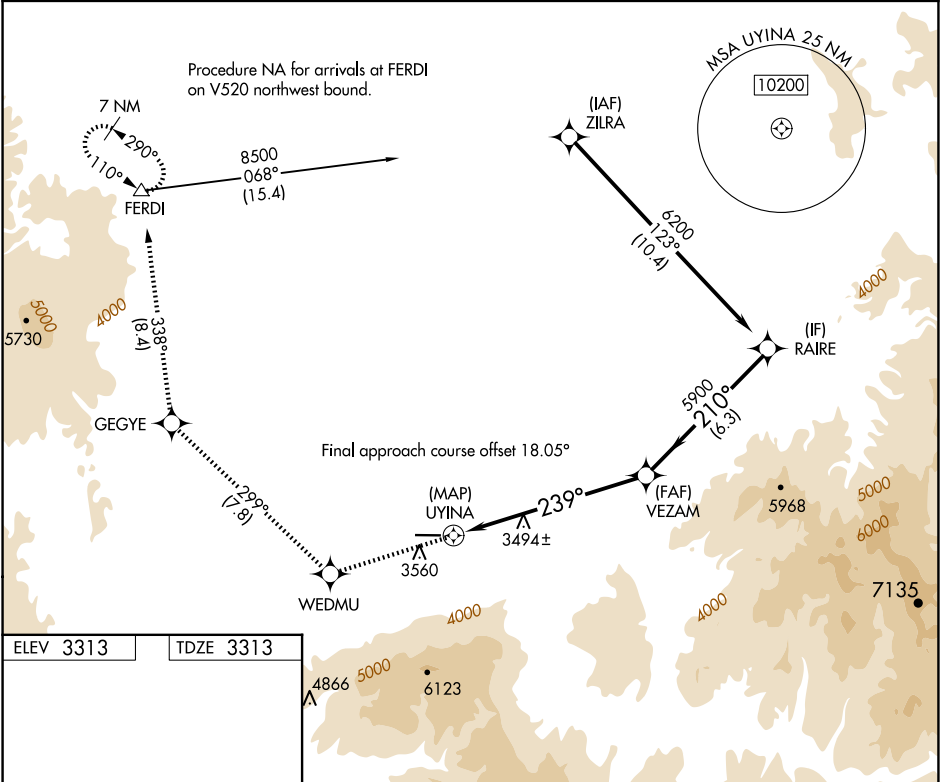
IDAHO COUNTY (GIC)

RNP APCH - GPS.

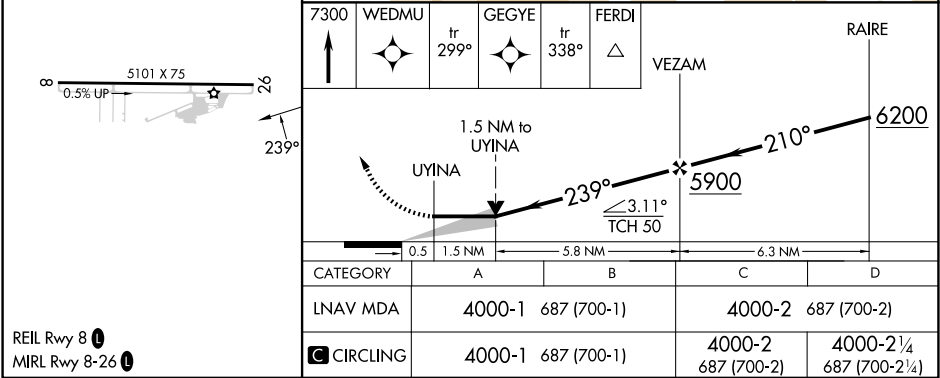
MISSED APPROACH: Climb to 7300 direct WEDMU and on track 299° to GEGYE and on track 338° to FERDI and hold, continue climb-in-hold to 7300.



 Circling NA south of Rwy 8-26.

AWOS-3 118.175	SEATTLE CENTER 123.95 290.55	CTAF 122.8 
-------------------	---------------------------------	---



ELEV 3313	TDZE 3313
-----------	-----------



REIL Rwy 8   
MIRL Rwy 8-26 

NW-1, 07 AUG 2025 to 04 SEP 2025

NW-1, 07 AUG 2025 to 04 SEP 2025