

APP CRS
181°

Rwy Idg
TDZE
444

Apt Elev
444

RNAV (GPS) RWY 18
BENTON MUNI (H96)

▼

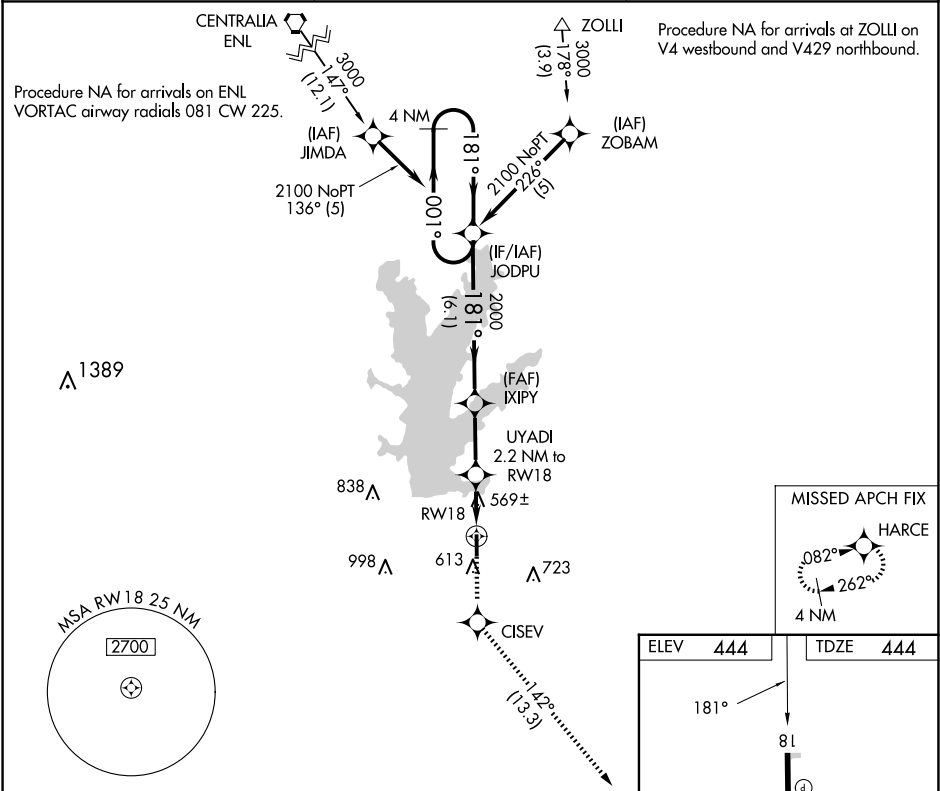
DME/DME RNP-0.3 NA. Rwy 18 helicopter visibility reduction below ¾ SM NA.

▲ NA

Use Marion altimeter setting; when not received, use Mount Vernon altimeter setting and increase all MDA 20 feet and increase LNAV Cat C visibility to 1¼ mile. Circling Rwy 36 NA at night.

MISSED APPROACH: Climb to 2100 direct CISEV and on track 142° to HARCE and hold.

MWA AWOS-3PT 119.675	KANSAS CITY CENTER 127.475 346.275	UNICOM 122.8 (CTAF) 0
-------------------------	---------------------------------------	--------------------------



4 NM

Holding Pattern

VGSI and descent angles not coincident

(VGSI Angle 3.33/TCH 45).

2100

↑

CISEV

✧

tr 142°

HARCE

✧

JODPU

IXIPY

UYADI

2.2 NM to RW18

2100

←001°

←181°

781°

2000

3.00°

TCH 40

1180

RW18

6.1 NM

2.6 NM

2.2 NM

CATEGORY

A

B

C

D

LNAV MDA

860-1

416 (500-1)

860-1½

416 (500-1½)

NA

CIRCLING

1000-1

556 (600-1)

1120-2

676 (700-2)

NA

REIL Rwys 18, 36

MIRL Rwy 18-36

4000 X 75

36

✧