

WAAS CH 61308 W18A	APP CRS 179°	Rwy ldg 6500 TDZE 0 Apt Elev 0
--	------------------------	---

RNAV (GPS) RWY 18

SOUTH LAFOURCHE LEONARD MILLER JR (G.A.O)

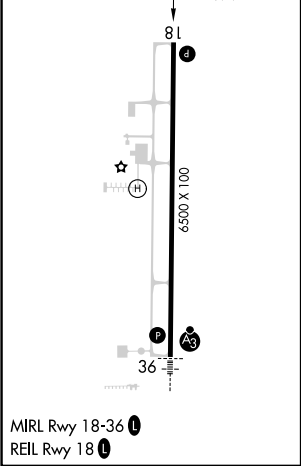
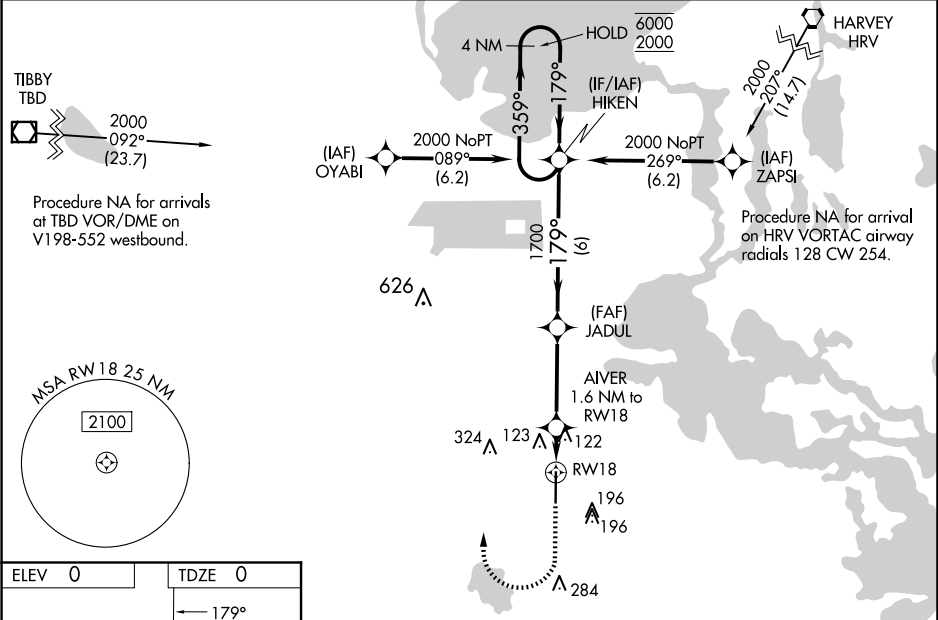
RNP APCH - GPS.

⚠

Rwy 18 helicopter visibility reduction below $\frac{3}{4}$ SM NA. For uncompensated Baro-VNAV systems, LNAV/VNAV NA below -15°C or above 54°C. When local altimeter setting not received, use Louis Armstrong New Orleans Intl altimeter setting: increase LPV DA to 396 feet and all visibilities $\frac{1}{4}$ SM; increase LNAV/VNAV DA to 361 feet, visibility Cats A and B $\frac{1}{4}$ SM and Cats C and D $\frac{1}{2}$ SM; increase all MDAs 80 feet and LNAV visibility Cats C and D $\frac{3}{4}$ SM and Circling visibility Cats C and D $\frac{1}{4}$ SM. Baro-VNAV and VDP NA when using Louis Armstrong New Orleans Intl altimeter setting.

MISSED APPROACH:
Climb to 520 then climbing right turn to 2000 direct HIKEN and hold.

AWOS-3PT 118.175	NEW ORLEANS APP CON 120.85 256.9	CINC DEL 120.85	UNICOM 123.0 (CTAF) 0
----------------------------	--	---------------------------	---------------------------------



520 ↑	2000 ↗	HIKEN ✦	4 NM Holding Pattern			
		HIKEN 359° → 6000 ← 179° 2000 GP 3.00° TCH 51				
CATEGORY	A		B		C	D
LPV DA	319-1 319 (400-1)					
LNAV/ VNAV DA	284-7/8 284 (300-7/8)		284-1 284 (300-1)			
LNAV MDA	380-1 380 (400-1)		380-1 3/4 380 (400-1 3/4) 380-2 380 (400-2)			
CIRCLING	440-1 440 (500-1)		560-1 560 (600-1) 640-1 3/4 640 (700-1 3/4) 640-2 640 (700-2)			

SC-4, 07 AUG 2025 to 04 SEP 2025

SC-4, 07 AUG 2025 to 04 SEP 2025