

24361

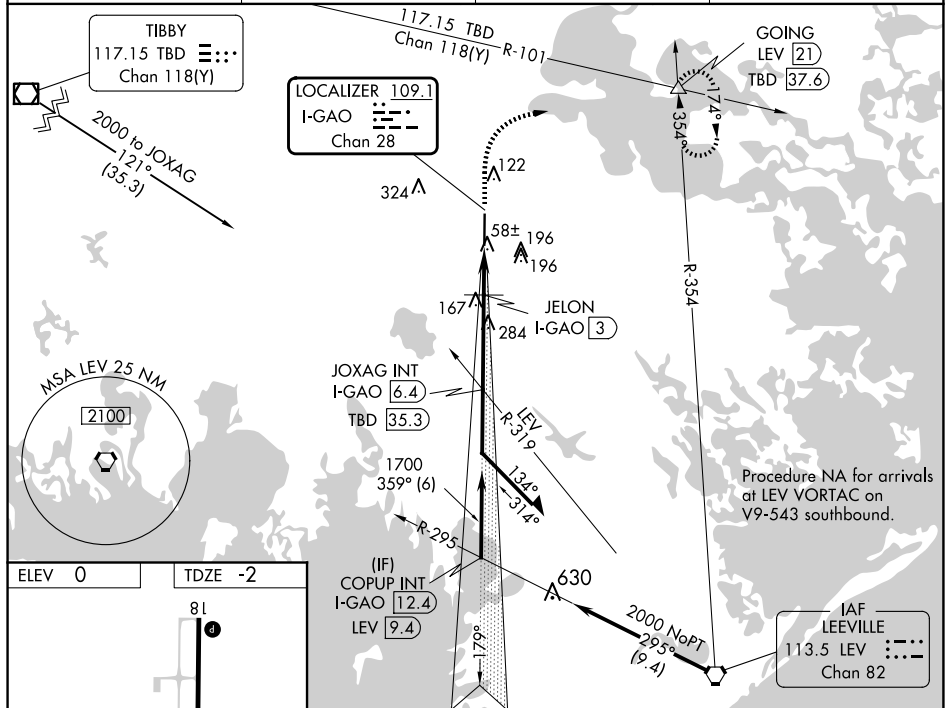
ILS or LOC RWY 36  
SOUTH LAFOURCHE LEONARD MILLER JR (GAO)

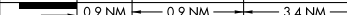
**T**



**MISSED APPROACH:** Climb to 1200, then climbing right turn to 2000 on heading 050° and TBD VOR/DME R-101 to GOING INT/LEV 21 DME and hold.

AWOS-3PT <b>118.175</b>	NEW ORLEANS APP CON <b>120.85 256.9</b>	CLNC DEL <b>120.85</b>	UNICOM <b>123.0 (CTAF) 0</b>
----------------------------	--	---------------------------	---------------------------------



1200 ↑	2000 hdg 050°	TBD R-101	GOING △	JOXAG INT I-GAO (6.4)	Remain within 10 NM
*LOC only.		JELON I-GAO (3)	1700	179°	2000
I-GAO (1.2)	*I-GAO (2.1)	620*	359°	1700	GS 3.00° TCH 51
					
CATEGORY	A	B	C	D	
S-ILS 36	198-1/2 200 (200-1/2)				
S-LOC 36	320-1/2 322 (400-1/2)				
CIRCLING	440-1 440 (500-1)	560-1 560 (600-1)	640-1 3/4 640 (700-1 3/4)	640-2 640 (700-2)	

SOUTH LAFOURCHE LEONARD MILLER JR (GAO)  
29°26'N-90°16'W ILS or LOC RWY 36