

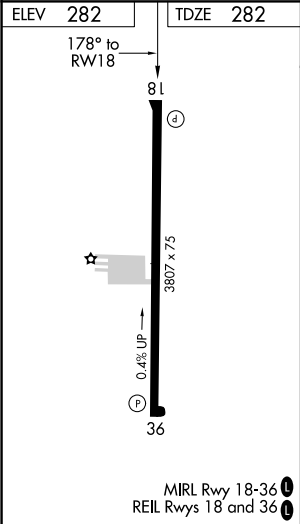
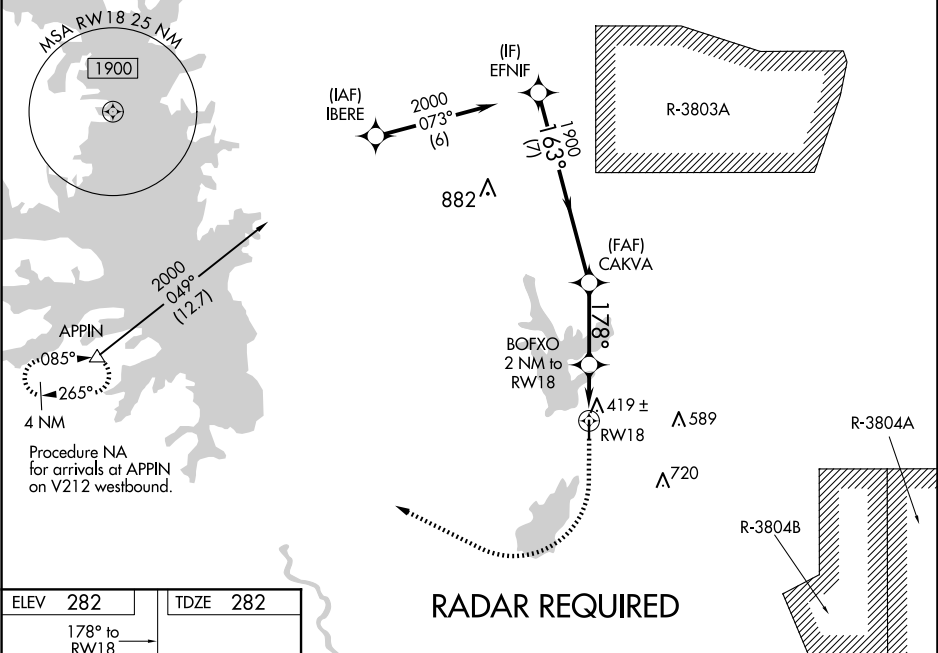
▼

NA

When VGSI inop, Circling Rwy 36 NA at night. Baro-VNAV NA. When VGSI inop, Straight-in/Circling Rwy 18 procedure NA at night. DME/DME RNP-0.3 NA. Visibility reduction by helicopters NA. Use Fort Polk altimeter setting; when not received, use De Ridder altimeter setting and increase all DA 26 feet and all MDA 40 feet; increase LNAV/VNAV all Cats visibility and LNAV Cat C visibility 1/8 SM, and Circling Cat C visibility 1/4 SM.

MISSED APPROACH: Climb to 800 then climbing right turn to 4000 direct APPIN and hold.

KPOE ATIS 134.85 282.2	POLK APP CON 123.7 261.3	UNICOM 122.8 (CTAF)
----------------------------------	------------------------------------	-------------------------------



RADAR REQUIRED				
<div><div>800</div><div>4000</div><div>APPIN </div></div> <div>*LNAV only.</div> <div><div>BOFXO 2 NM to RW18</div><div>CAKVA</div><div>EFNIF</div><div>178°</div><div>163°</div><div>1900</div><div>2000</div><div>960*</div><div>GP 3.00°</div><div>TCH 50</div></div>				
CATEGORY	A	B	C	D
LPV DA	564-1		282 (300-1)	NA
LNAV/VNAV DA	622-1 1/8		340 (400-1 1/8)	NA
LNAV MDA	720-1	438 (500-1)	720-1 1/4 438 (500-1 1/4)	NA
CIRCLING	760-1 478 (500-1)	800-1 518 (600-1)	1000-2 718 (800-2)	NA