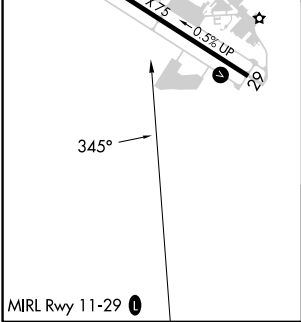
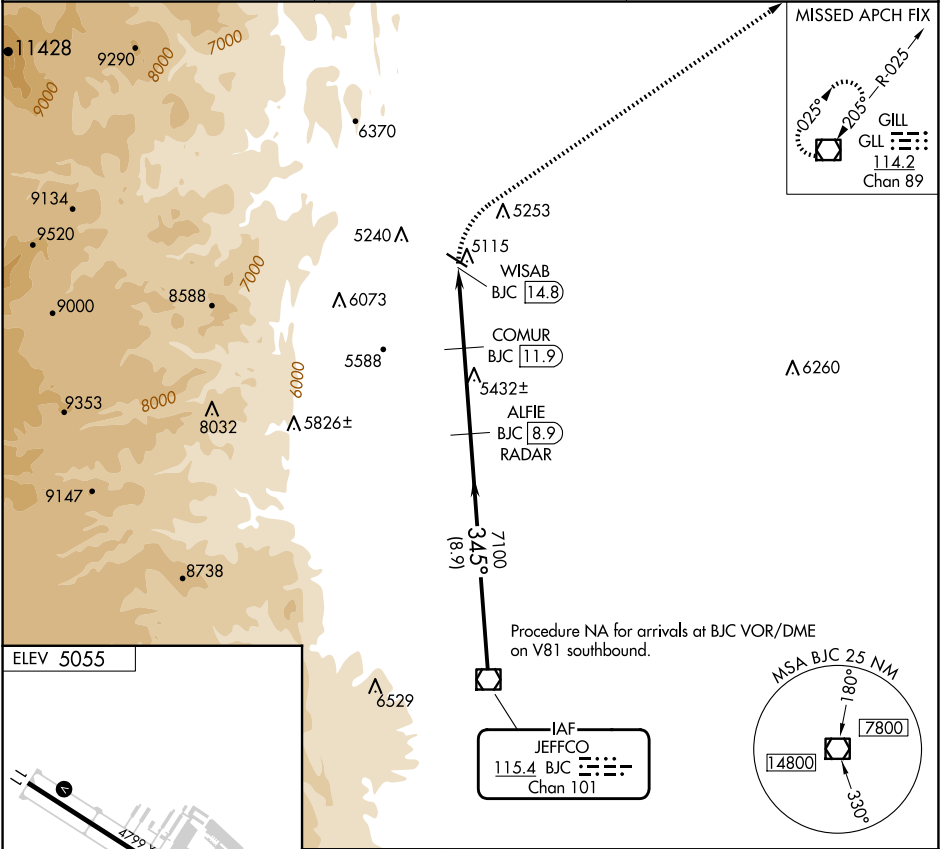


VOR/DME BJC 115.4 Chan 101	APP CRS 345°	Rwy Ldg TDZE Apt Elev N/A N/A 5055
--	------------------------	--

VOR/DME-A
VANCE BRAND (LMO)

When local altimeter setting not received, use Denver Intl altimeter setting and increase all MDA 120 feet; and increase Cat C visibility ½ mile and Cat D ¼ mile.	MISSED APPROACH: Climbing right turn to 7000 direct GLL VOR/DME and hold.
--	---

AWOS-3 120.0	DENVER APP CON 125.12 263.02	UNICOM 122.975 (CTAF) 0
------------------------	--	--



7000	GLL	ALFIE BJC [8.9] RADAR	BJC VOR/DME
WISAB BJC [14.8]	COMUR BJC [11.9]	7100	9200
2.9 NM	3.1 NM	8.9 NM	
CATEGORY	A	B	C
CIRCLING	5640-1	585 (600-1)	5880-2½ 825 (900-2½)
			6500-3 1445 (1500-3)