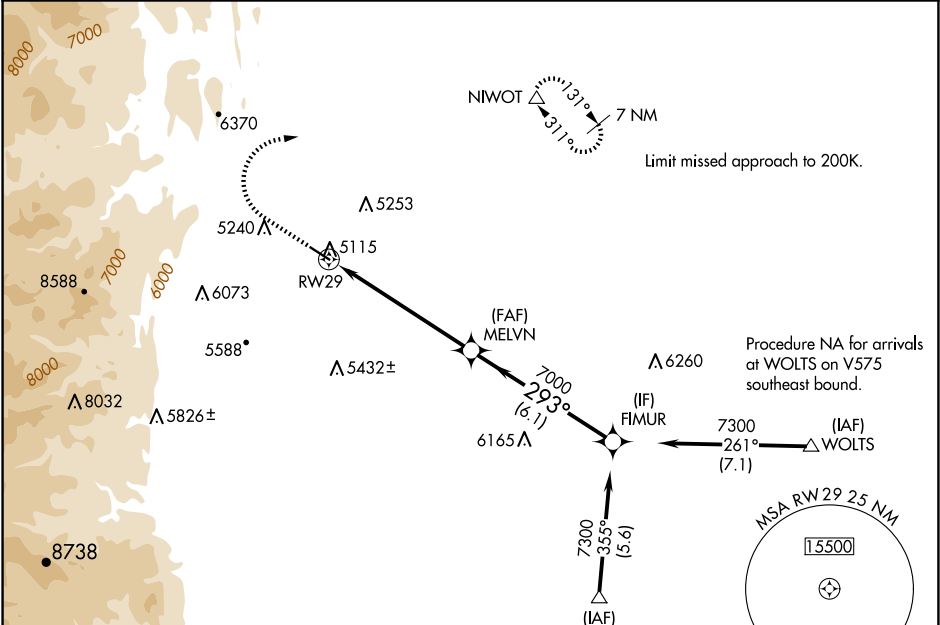


WAAS CH 86834 W29A	APP CRS 293°	Rwy Ldg TDZE Apt Elev	4799 5047 5055
--	------------------------	-----------------------------	---

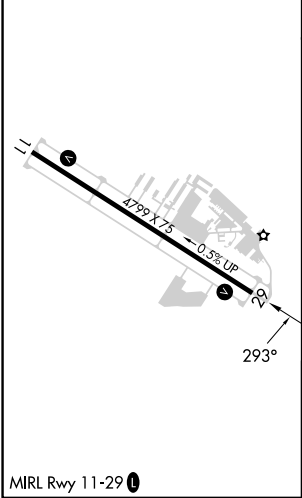
RNAV (GPS) RWY 29
VANCE BRAND (LMO)



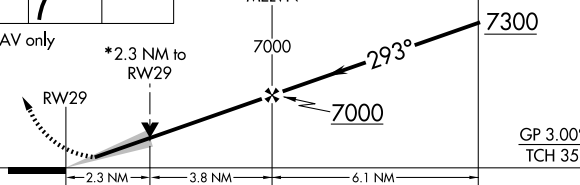

RNP APCH. ⚠ For uncompensated Baro-VNAV systems, procedure NA below -25°C or above 54°C.	MISSED APPROACH: Climb to 5540 then climbing right turn to 7400 direct NIWOT and hold, continue climb-in-hold to 7400.
---	--

AWOS-3 120.0	DENVER APP CON 125.12 263.02	UNICOM 122.975 (CTAF) ①
------------------------	--	-----------------------------------



ELEV 5055	TDZE 5047
-----------	-----------



Procedure NA for arrivals at FIPSS on V85 southeast bound.				FIPSS	
5540 ↑	7400 	NIWOT △	FIMUR		
<div><div>* LNAV only</div><div><div><div>* 2.3 NM to RW29</div><div>GP 3.00° TCH 35</div></div></div></div>					
CATEGORY		A	B	C	D
LPV	DA	5338-7⁄8 291 (300-7⁄8)			
LNAV/ VNAV	DA	5387-1 340 (400-1)			
LNAV	MDA	5800-1 753 (800-1)	5800-1¼ 753 (800-1¼)	5800-2	753 (800-2)
 CIRCLING		5800-1 745 (800-1)	5800-1¼ 745 (800-1¼)	5860-2¼ 805 (900-2¼)	6480-3 1425 (1500-3)