

ECHOO ONE DEPARTURE (RNAV)

AL-9041 (FAA)

VANCE BRAND (LMO)
LONGMONT, COLORADO

SW-1, 07 AUG 2025 to 04 SEP 2025

TOP ALTITUDE:
FL230

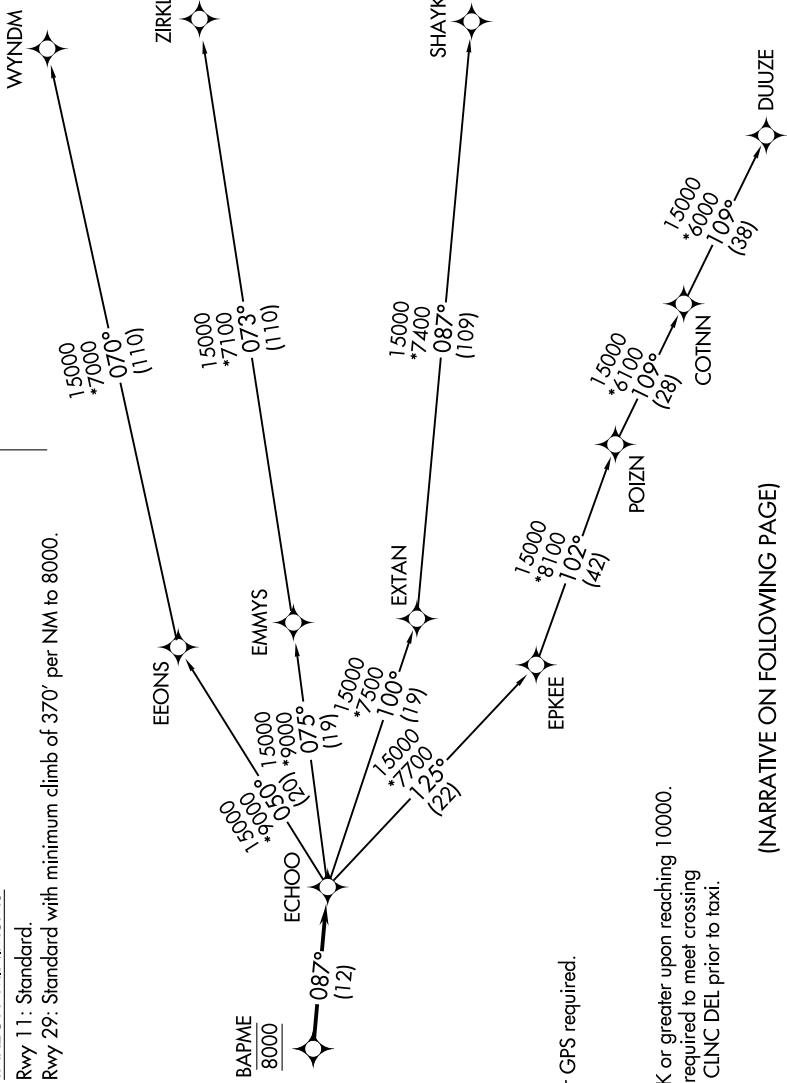
TAKEOFF MINIMUMS

Rwy 11: Standard.
Rwy 29: Standard with minimum climb of 370' per NM to 8000.



N

DENVER DEP CON
125.12 263.02



NOTE: DME/DME/IRU or GPS required.
NOTE: RNAV 1.
NOTE: Turbojets only.
NOTE: RADAR required.
NOTE: Accelerate to 250K or greater upon reaching 10000.
If slower speed is required to meet crossing restrictions advise CLNC DEL prior to taxi.

(NARRATIVE ON FOLLOWING PAGE)

NOTE: Chart not to scale.

ECHOO ONE DEPARTURE (RNAV)

SW-1, 07 AUG 2025 to 04 SEP 2025