

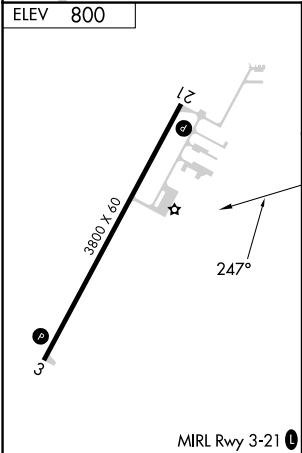
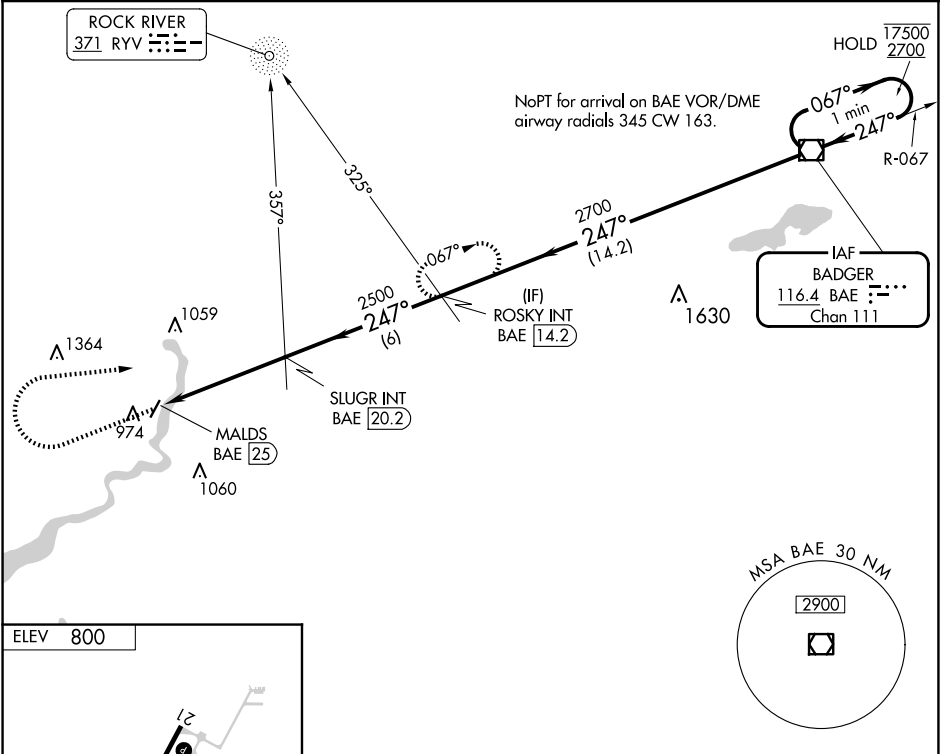
VOR/DME BAE	APP CRS	Rwy Idg	N/A
116.4	247°	TDZE	N/A
Chan 111		Apt Elev	800

VOR-A

FORT ATKINSON MUNI (61C)

ADF or DME required.	MISSED APPROACH: Climb to 2000 then climbing right turn to 2700 on heading 082° and on BAE VOR/DME R-247 to ROSKY INT/BAE 14.2 DME and hold.
<div><div></div><div>Circling to Rwy 3 NA at night. Rwy 3 helicopter visibility reduction below 1 SM NA. Use Watertown altimeter setting.</div></div>	

RYV AWOS-3 119.975	MADISON APP CON ★ 120.1 350.3	CTAF 122.9
------------------------------	---	----------------------



2000	2700	BAE R-247	ROSKY INT 14.2	One Minute Holding Pattern
<div><div></div><div>hdg 082°</div></div>				
MALDS BAE 25	SLUGR INT BAE 20.2	ROSKY INT BAE 14.2	BAE VOR/DME	
2500	2700	2700	17500	2700
4.8 NM	6 NM	14.2 NM		
FAF to MAP 4.8 NM				
CATEGORY	A	B	C	D
<div><div></div><div>CIRCLING</div></div>	1440-1	640 (700-1)	1460-1¾ 660 (700-1¾)	NA

EC-3, 07 AUG 2025 to 04 SEP 2025

EC-3, 07 AUG 2025 to 04 SEP 2025