

APP CRS
302°

Rwy Idg
TDZE
3333

Apt Elev
3333

RNAV (GPS) RWY 30

PINE RIDGE (IEN)

RNP APCH.

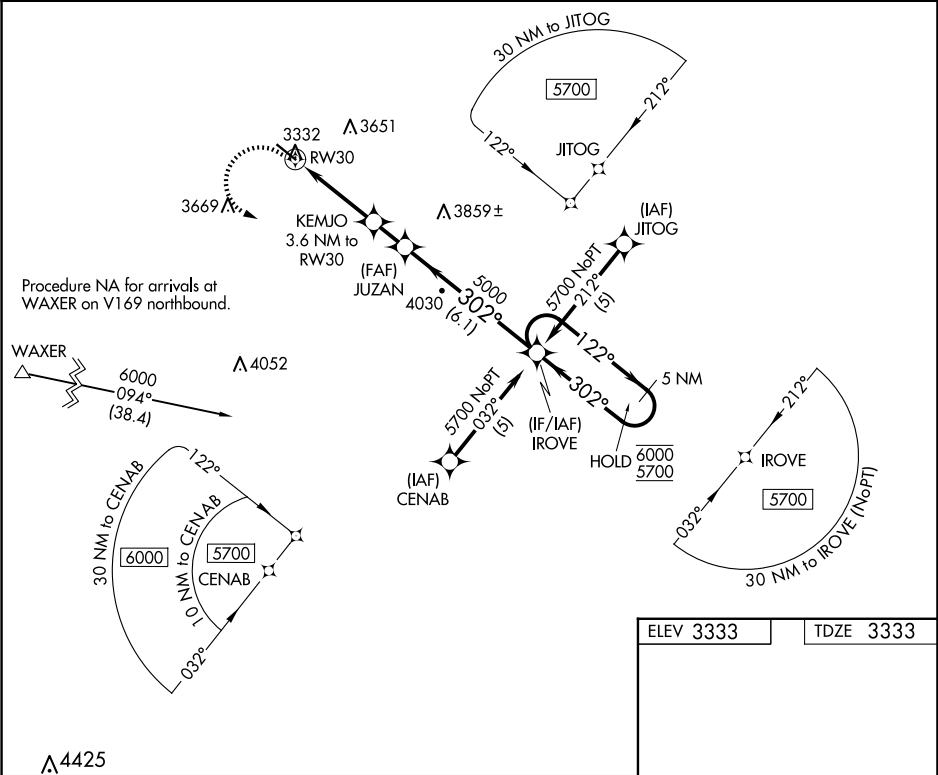
▽

▲

Rwy 30 helicopter visibility reduction below ¾ SM NA.

MISSED APPROACH: Climbing left turn to 5700 direct IROVE and hold.

ASOS 126.775	DENVER CENTER 127.95 338.2	CTAF 122.9 0
-----------------	-------------------------------	-----------------



5700 IROVE

VGSI and descent angles not coincident (VGSI Angle 3.00/TCH 28).

KEMJO 3.6 NM to RW30

JUZAN

5 NM Holding Pattern

5700 6000

302° 122° 302°

2.6 NM to RW30

1 NM

1.4 NM

6.1 NM

4540 5000

3.04° TCH 40

302° to RW30

CATEGORY	A	B	C	D
LNAV MDA	4180-1 847 (900-1)	4180-1¼ 847 (900-1¼)	NA	NA
CIRCLING	4180-1 847 (900-1)	4180-1¼ 847 (900-1¼)	NA	NA

MIRL Rwy 12-30 0