

WAAS CH 77630 W31A	APP CRS 308°	Rwy Idg 3799 TDZE 2169 Apt Elev 2175
--	------------------------	---

RNAV (GPS) RWY 31

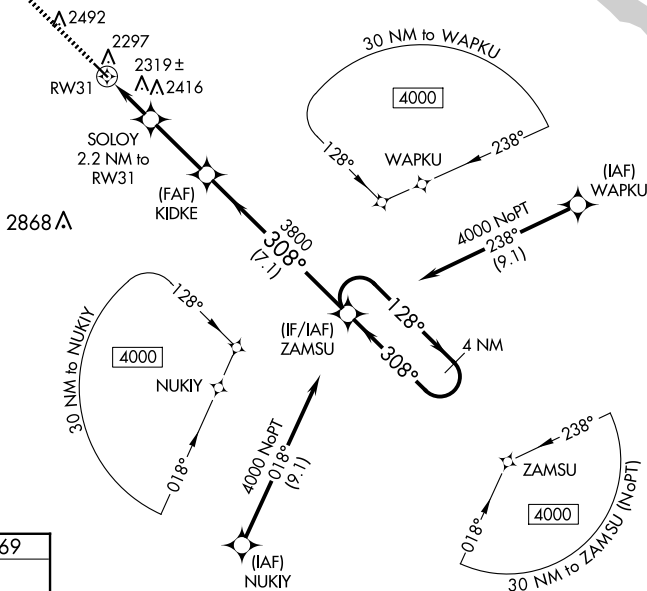
GREGORY MUNI/FLYNN FLD (9D1)

V **NA** Helicopter visibility reduction below 1 SM NA. When VGSI inoperative, Circling Rwy 13 NA at night. Baro-VNAV NA. When VGSI inoperative, Straight-in/Circling Rwy 31 procedure NA at night. DME/DME RNP-0.3 NA. Use Winner altimeter setting; when not received use Ainsworth altimeter setting and increase all DA 95 feet and all MDA 100 feet and increase LPV all Cats visibility $\frac{1}{4}$ SM, LNAV/VNAV all Cats visibility $\frac{3}{8}$ SM, LNAV Cat C and Circling Cat C visibility $\frac{1}{4}$ SM.

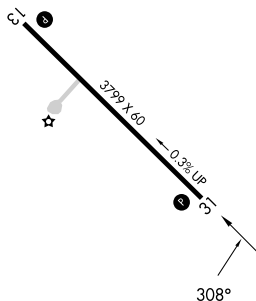
MISSED APPROACH:
Climb to 4100 direct
HAIRY and hold.

ICR ASOS 126.775	MINNEAPOLIS CENTER 125.1 269.1	GCO 121.725	AUNICOM 122.8 (CTAF) 0
----------------------------	--	-----------------------	----------------------------------

MISSED APCH FIX



ELEV 2175		TDZE 2169
-----------	--	-----------

MIRL Rwy 13-31 **L**

GREGORY, SOUTH DAKOTA

Orig-B 20MAY21

43°13'N-99°24'W

GREGORY MUNI/FLYNN FLD (9D1)

RNAV (GPS) RWY 31

NC-1, 07 AUG 2025 to 04 SEP 2025

4100 HAIRY

VGSJ and RNAV glidepath not coincident (VGSJ Angle 3.00/TCH 32).

ZAMSU 4 NM Holding Pattern

*RNAV only.

SOLO 2.2 NM to RW31

KIDKE 3800

2900*

308°

128°

308°

4000

GP 3.00° TCH 40

CATEGORY	A	B	C	D
LPV DA	2489-1 1/8	320 (400-1 1/8)		NA
RNAV/VNAV DA	2709-1 7/8	540 (600-1 7/8)		NA
RNAV MDA	2640-1	471 (500-1)	2640-1 3/8 471 (500-1 3/8)	NA
CIRCLING	2700-1 525 (600-1)	2780-1 605 (700-1)	2880-2 705 (800-2)	NA