

APP CRS
127°

Rwy Idg
TDZE
Apt Elev

3799
2170
2175

RNAV (GPS) RWY 13

GREGORY MUNI/FLYNN FLD (9D1)

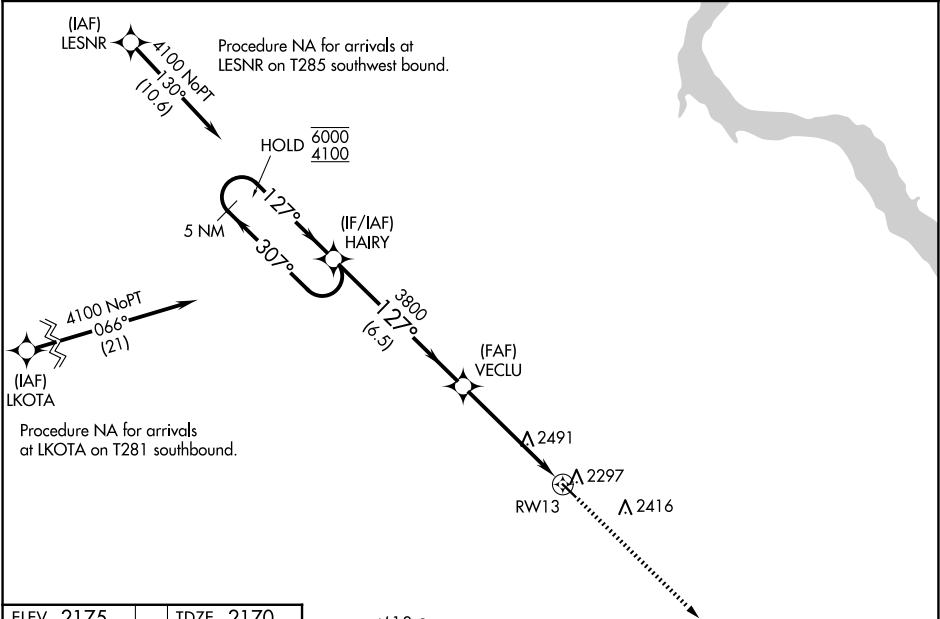
RNP APCH.

NA

Rwy 13 helicopter visibility reduction below 3/4 SM NA. Use Winner altimeter setting; when not received, use Ainsworth altimeter setting and increase all MDA 100 feet; increase LNAV Cat B visibility 1/4 SM and Cat C visibility 1/8 SM.

MISSED APPROACH: Climb to 4000 direct ZAMSU and hold.

ICR ASOS 126.775	MINNEAPOLIS CENTER 125.1 269.1	GCO 121.725	AUNICOM 122.8 (CTAF) 0
---------------------	-----------------------------------	----------------	---------------------------



ELEV 2175

TDZE 2170

MIRL Rwy 13-31 0

MSA RW 13 2.5 NM
3900

2868

ZAMSU 128° 4 NM
308°

5 NM Holding Pattern

VGSI and RNAV glidepath not coincident (VGSI Angle 3.00°/TCH 31°).

4000 ZAMSU

HAIRY

VECLU

RW13

307° 127° 127° 3.00° TCH 40

6.5 NM 5 NM

CATEGORY	A	B	C	D
LNAV MDA	2820-1	650 (700-1)	2820-1 7/8 650 (700-1 7/8)	NA