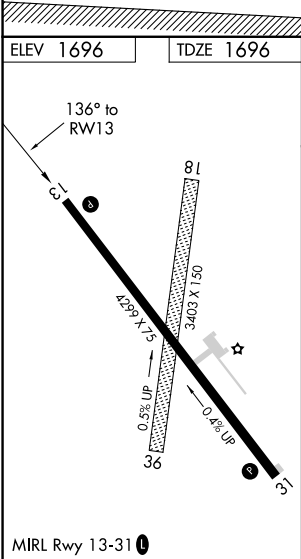
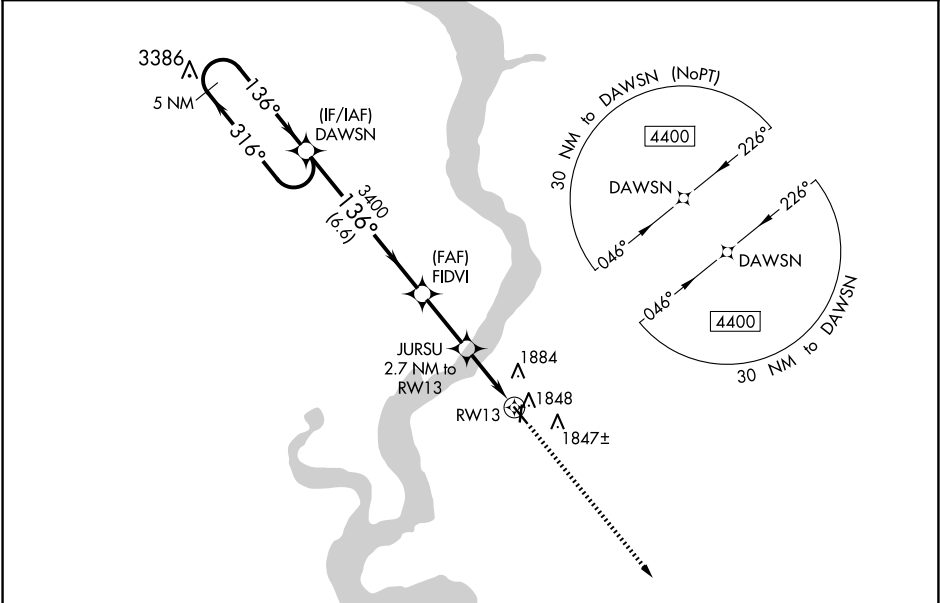


WAAS CH 42841 W13A	APP CRS 136°	Rwy Idg TDZE Apt Elev	4299 1696 1696
--	------------------------	-----------------------------	---

RNAV (GPS) RWY 13
CHAMBERLAIN MUNI (9V9)

DME/DME RNP-0.3 NA. Rwy 13 helicopter visibility reduction below ¾ SM NA. Circling NA to Rwy 18 and 36.		MISSED APPROACH: Climb to 3600 direct COCOA and hold.	
AWOS-3P 118.025	MINNEAPOLIS CENTER 125.1 269.1	GCO 121.725	UNICOM 122.8 (CTAF)



Visual Segment - Obstacles.				3600	COCO A
5 NM Holding Pattern					
4400 ← 316° → 136° → 136° → 3400					
6.6 NM				2.5 NM	1.6 NM
JURSU 2.7 NM to RW13				1.1 NM to RW13	
2600					
RW13					
CATEGORY	A	B	C	D	
LP MDA	2080-1	384 (400-1)	2080-1½ 384 (400-1½)	NA	
LNAV MDA	2100-1	404 (500-1)	2100-1½ 404 (500-1½)	NA	
CIRCLING	2200-1	504 (600-1)	2200-1½ 504 (600-1½)	NA	

NC-1, 07 AUG 2025 to 04 SEP 2025

NC-1, 07 AUG 2025 to 04 SEP 2025