

| | | | |
|--|------------------------|-----------------------------|---|
| WAAS CH 82518 W35A | APP CRS 354° | Rwy Idg TDZE Apt Elev | 3898 822 825 |
|--|------------------------|-----------------------------|---|

RNAV (GPS) RWY 35

HUTSON FLD (GAF')

RNP APCH - GPS.

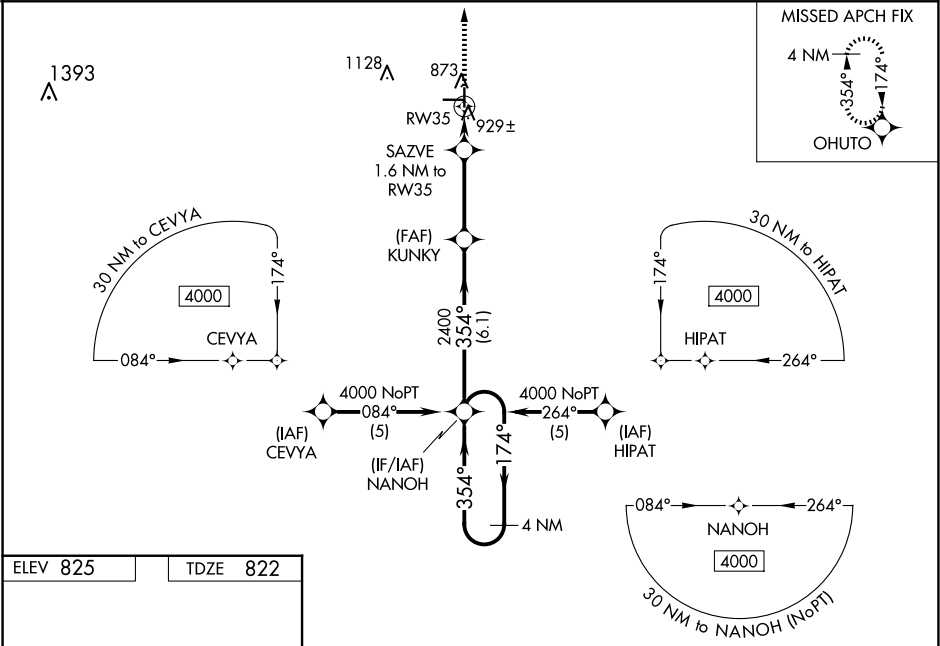
▼

▲ NA

For uncompensated Baro-VNAV systems, LNAV/VNAV NA below -16°C or above 54°C .
When local altimeter setting not received, use Grand Forks Intl altimeter setting: increase LPV DA to 1141 feet and all visibilities ¼ SM; increase LNAV/VNAV DA to 1268 feet and all visibilities ¼ SM; increase all MDA's 80 feet and visibility circling Cat C ¼ SM. Baro-VNAV NA when using Grand Forks Intl altimeter setting.
Circling NA to Rwy's 8 and 26.

MISSED APPROACH: Climb to 4000 direct OHUTO and hold, continue climb-in-hold to 4000.

| | | |
|--------------------------|---|---------------------------------|
| AWOS-3 118.625 | GRAND FORKS APP CON ★ 118.1 318.1 | UNICOM 122.8 (CTAF) 0 |
|--------------------------|---|---------------------------------|



| | | | | | | |
|--------------|----------|--------------|-------------------------|--|--------|-----------------|
| ELEV 825 | TDZE 822 | 4000 | OHUTO | VGSI and RNAV glidepath not coincident (VGSI Angle 3.00/TCH 26). | 4 NM | Holding Pattern |
| | | *LNAV only. | SAZVE 1.6 NM to RW35 | KUNKY 2400 | NANOH | 174° → 4000 |
| | | | RW35 | *1360 | 2400 | ← 354° |
| | | | 1.6 NM | 3.2 NM | 6.1 NM | |
| CATEGORY | A | B | C | D | | |
| LPV DA | 1072-1 | 250 (300-1) | | NA | | |
| LNAV/VNAV DA | 1199-1¼ | 377 (400-1¼) | | NA | | |
| LNAV MDA | 1180-1 | 358 (400-1) | | NA | | |
| CIRCLING | 1340-1 | 515 (600-1) | 1440-1¾ 615 (700-1¾) | NA | | |