

WAAS CH <b>53518</b> <b>W17A</b>	APP CRS <b>174°</b>	Rwy Idg <b>3898</b> TDZE <b>822</b> Apt Elev <b>825</b>
--	------------------------	---

RNAV (GPS) RWY 17

HUTSON FLD (GAF')

RNP APCH - GPS.

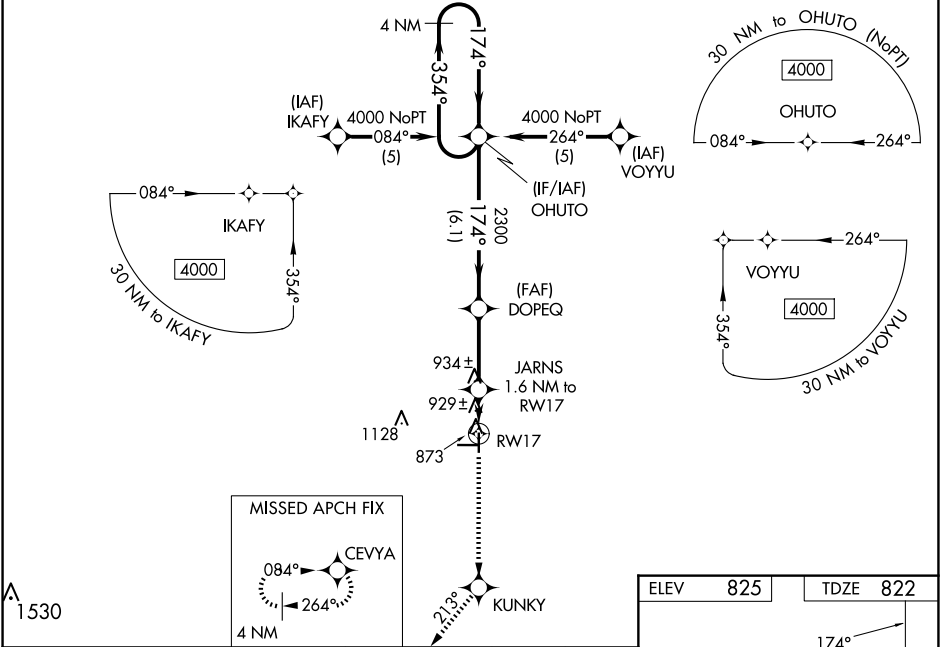
⚠

NA

For uncompensated Baro-VNAV systems, LNAV/VNAV NA below -16°C or above 54°C. Rwy 17 helicopter visibility reduction below ¾ SM NA. When local altimeter setting not received, use Grand Forks Intl altimeter setting: increase LPV DA to 1141 feet and all visibilities ¾ SM; increase LNAV/VNAV DA to 1297 feet and all visibilities ¾ SM; increase all MDA's 80 feet and visibility LNAV and circling Cat C ½ SM. Baro-VNAV NA when using Grand Forks Intl altimeter setting. Circling NA to Rwys 8 and 26.

MISSED APPROACH: Climb to 4000 direct KUNKY and on track 213° to CEVYA and hold, continue climb-in-hold to 4000.

AWOS-3 <b>118.625</b>	GRAND FORKS APP CON★ <b>118.1 318.1</b>	UNICOM <b>122.8</b> (CTAF) <b>0</b>
--------------------------	--	--



VGSI and RNAV glidepath not coincident (VGSI Angle 3.00/TCH 26).				
4 NM Holding Pattern				
GP 3.00° TCH 40				
DOPEQ 2300 JARNS 1.6 NM to RW17 RW17 2300				
*1360				
6.1 NM 2.9 NM 1.6 NM				
CATEGORY	A	B	C	D
LPV DA	1072-1	250 (300-1)		NA
LNAV/VNAV DA	1228-1½	406 (500-1½)		NA
LNAV MDA	1200-1	378 (400-1)		NA
CIRCLING	1340-1	515 (600-1)	1440-1¾ 615 (700-1¾)	NA

