

APP CRS
309°

| | |
|----------|-------------|
| Rwy Idg | 3500 |
| TDZE | 1424 |
| Apt Elev | 1424 |

RNAV (GPS) RWY 31

COOPERSTOWN MUNI (S32)

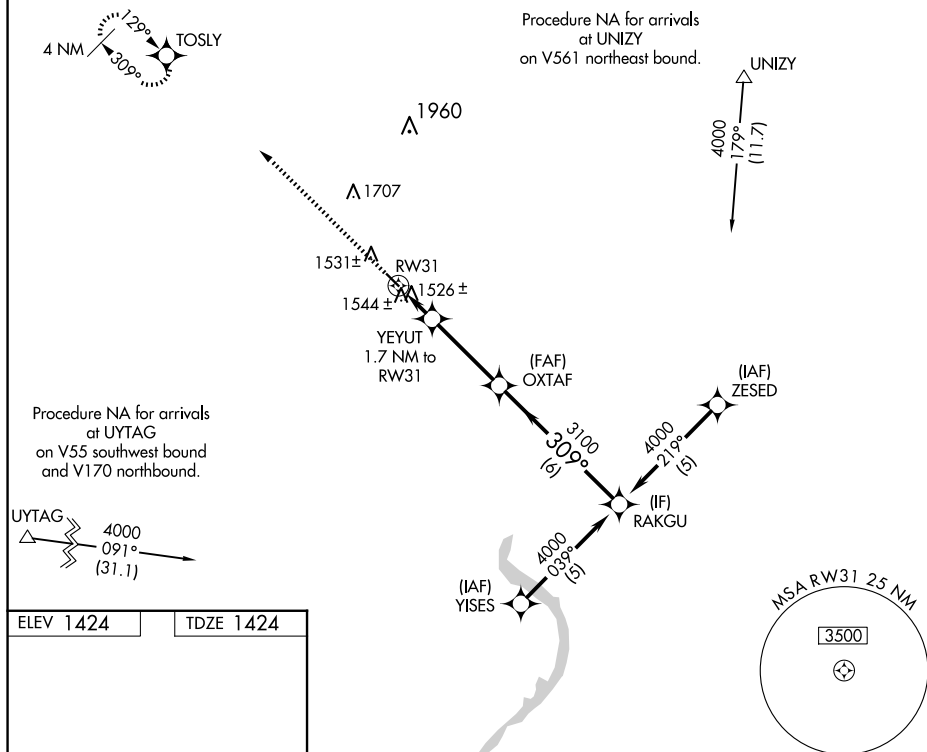


A NA local altimeter setting not received, use Jamestown altimeter setting and increase all MDA 100 feet and increase LNAV Cat C visibility ¼ mile.

MISSED APPROACH: Climb to 3200 direct TOSLY and hold.

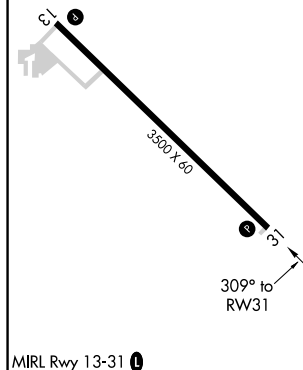
AWOS-3
118.75

MINNEAPOLIS CENTER
132.15 269.6

CTAF
122.9 **L**

ELEV 1424

TDZE 1424

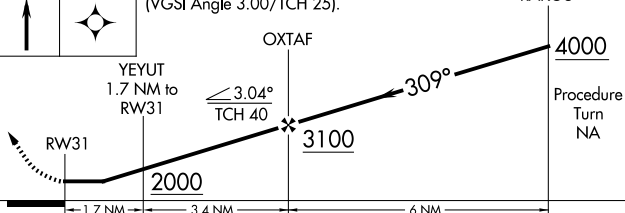
MIRL Rwy 13-31 **L**

320C

TOSLY

VGSI and descent angles not coincident
(VGSI Angle 3.00/TCH 25).

RAKGU



Procedure
Turn
NA

| CATEGORY | A | B | C | D |
|----------|--------------------|----------------------|---|----|
| LNAV MDA | 1800-1 376 (400-1) | | | NA |
| CIRCLING | 1880-1 456 (500-1) | 1880-1½ 456 (500-1½) | | NA |

COOPERSTOWN, NORTH DAKOTA
Orig 18NOV10

47°25'N-98°06'W

COOPERSTOWN MUNI (S32)
RNAV (GPS) RWY 31

NC-1, 07 AUG 2025 to 04 SEP 2025