

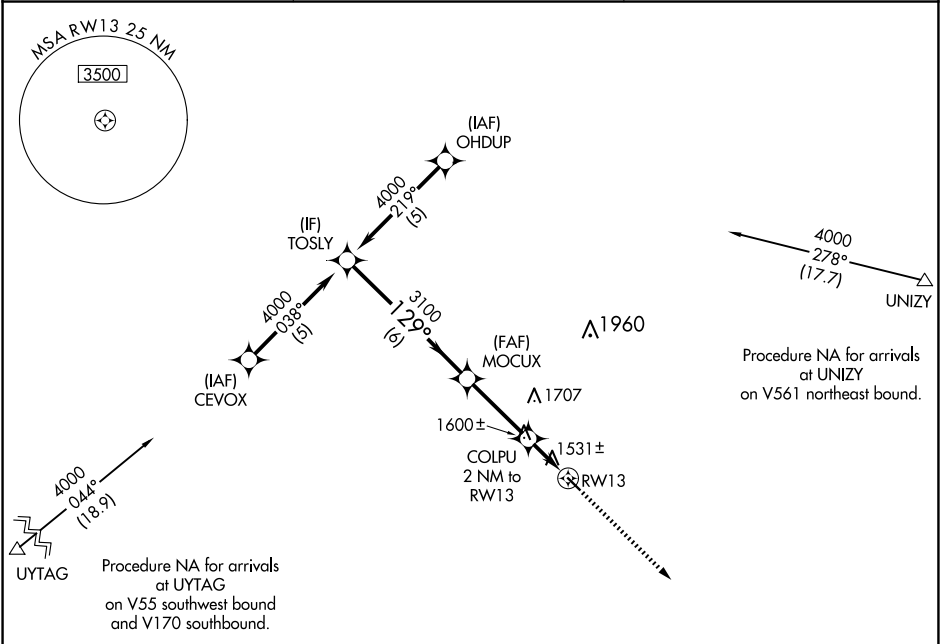
| | | |
|---------|----------|------|
| APP CRS | Rwy Idg | 3500 |
| 129° | TDZE | 1424 |
| | Apt Elev | 1424 |

RNAV (GPS) RWY 13

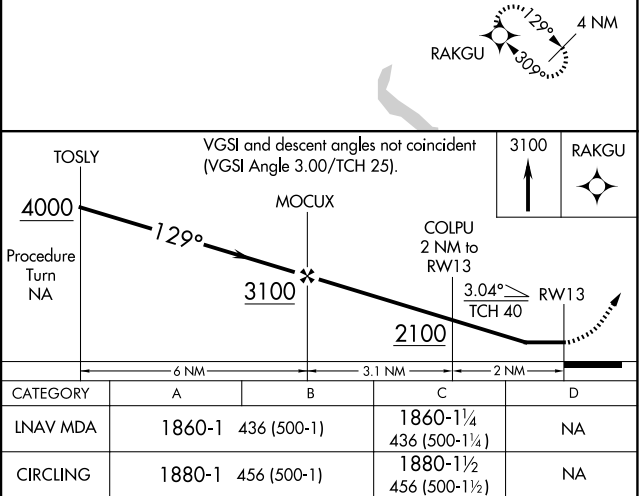
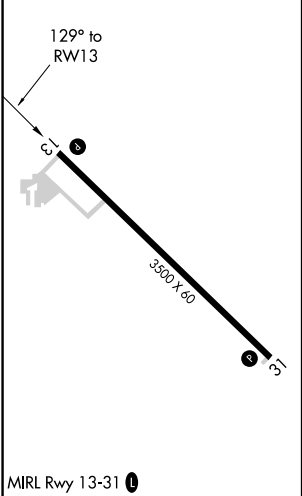
COOPERSTOWN MUNI (S32)

| | |
|--|---|
| <div><div><div></div><div>NA</div></div><div>DME/DME RNP-0.3 NA. Visibility reduction by helicopters NA. When local altimeter setting not received, use Jamestown altimeter setting and increase all MDA 100 feet and increase LNAV Cat C visibility ¼ mile.</div></div> | MISSED APPROACH: Climb to 3100 direct RAKGU and hold. |
|--|---|

| | | |
|------------------|------------------------------------|-----------------|
| AWOS-3 118.75 | MINNEAPOLIS CENTER 132.15 269.6 | CTAF 122.9 0 |
|------------------|------------------------------------|-----------------|



| | |
|-----------|-----------|
| ELEV 1424 | TDZE 1424 |
|-----------|-----------|



NC-1, 07 AUG 2025 to 04 SEP 2025

NC-1, 07 AUG 2025 to 04 SEP 2025