

APP CRS
305°

Rwy Idg
TDZE
Apt Elev

3505
1335
1335

RNAV (GPS) RWY 30

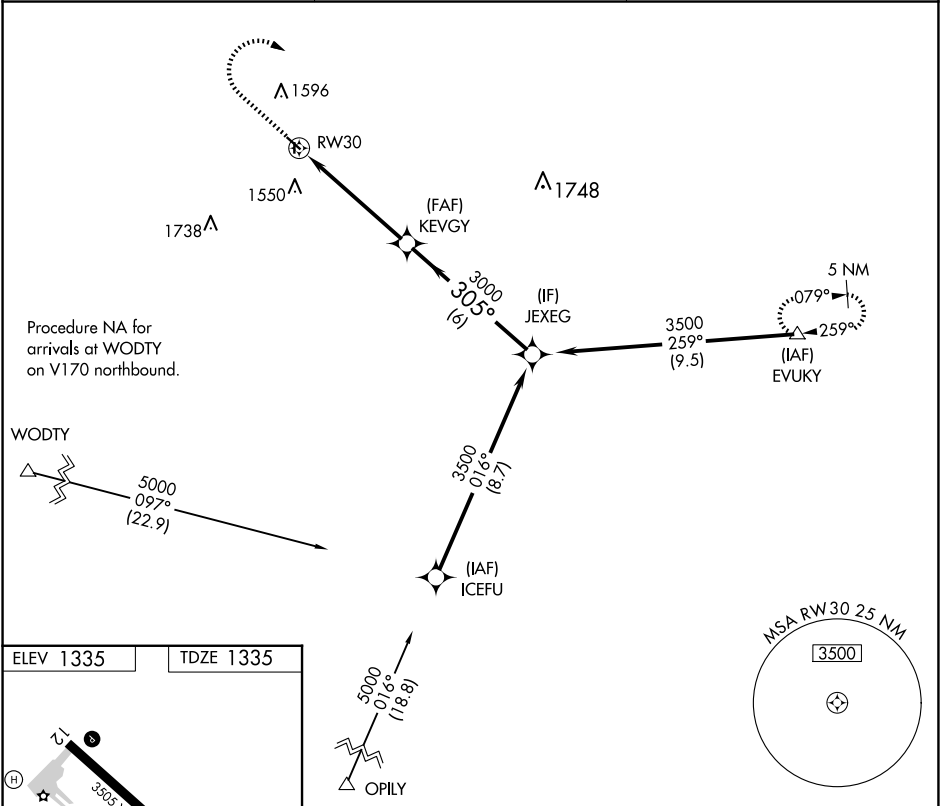
OAKES MUNI (2D5)

RNP APCH

When local altimeter setting not received, use Aberdeen altimeter setting; increase all MDA 120 feet and LNAV and Circling Cat C visibility ¼ mile. Circling Rwy 17, 35 NA. Rwy 30 helicopter visibility reduction below 1 SM NA.

MISSED APPROACH: Climb to 2000 then climbing right turn to 5000 direct EVUKY and hold.

AWOS-3 118,675	MINNEAPOLIS CENTER 124.2 270.3	CTAF 122.9 0
-------------------	-----------------------------------	-----------------



ELEV 1335	TDZE 1335