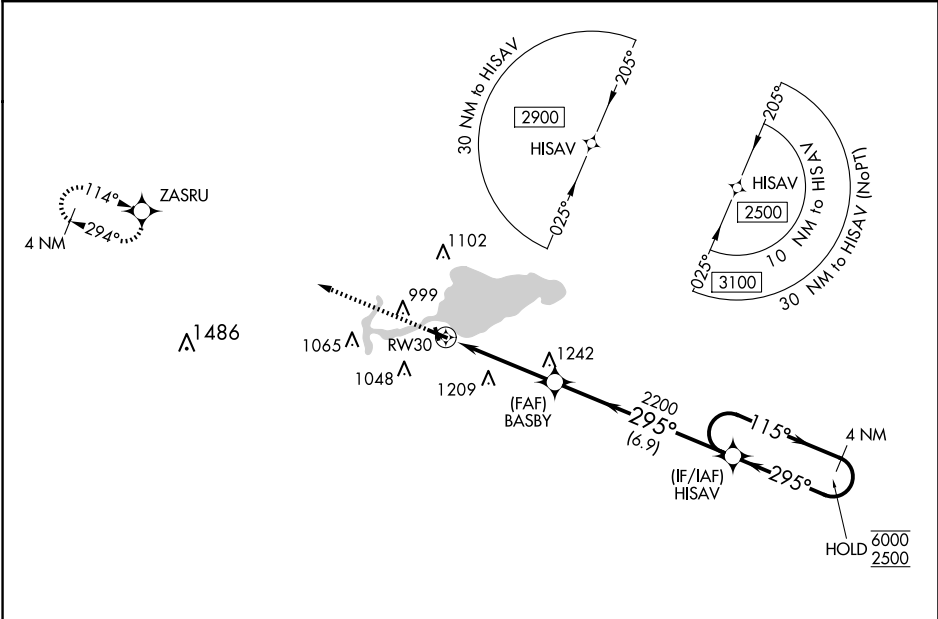


WAAS CH 77729 W30A	APP CRS 295°	Rwy Idg TDZE 810 Apt Elev 813	3901 810 813
--	------------------------	---	---

RNAV (GPS) RWY 30
SHAWANO MUNI (E/ZS)

RNP APCH - GPS.	MISSED APPROACH: Climb to 2700 direct ZASRU and hold.
▼ Rwy 30 helicopter visibility reduction below ¾ SM NA. For uncompensated Baro-VNAV systems, LNAV/VNAV NA below -16°C or above 54°C. Circling to Rwy 12, 35 NA at night.	

AWOS-3 118.65	GREEN BAY APP CON ★ 119.4 338.2	UNICOM 122.8 (CTAF) ①
-------------------------	---	---------------------------------



ELEV 813	TDZE 810
----------	----------

