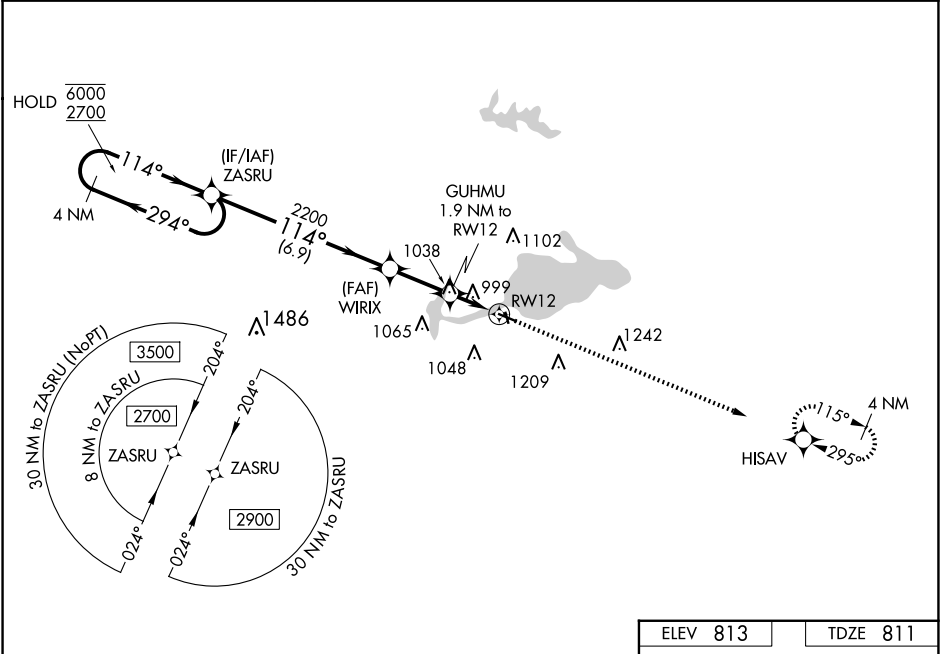


WAAS CH 86429 W12A	APP CRS 114°	Rwy Idg TDZE 811 Apt Elev 813	3901 811 813
--	------------------------	---	---

RNAV (GPS) RWY 12
SHAWANO MUNI (E/ZS)

RNP APCH - GPS.		MISSED APPROACH: Climb to 2500 direct HISAV and hold.
▼ Rwy 12 helicopter visibility reduction below 1 SM NA. For uncompensated Baro-VNAV systems, LNAV/VNAV NA below -16°C or above 54°C. Straight-in Rwy 12 and Circling Rwy 12, 35 NA at night.		
AWOS-3 118.65	GREEN BAY APP CON ★ 119.4 338.2	UNICOM 122.8 (CTAF) 0



4 NM Holding Pattern		ZASRU	2500 ↑		HISAV ✦
6000 ← 294° 2700 → 114°					
GP 3.00° TCH 45					
		WIRIX 2200	GUHMU 1.9 NM to RW12	RW12	
		2200	1460		
		6.9 NM	2.3 NM	1.9 NM	
CATEGORY	A	B	C	D	
LPV DA	1082-1 271 (300-1)				
LNAV/VNAV DA	1378-1½ 567 (600-1½)				
LNAV MDA	1300-1	489 (500-1)	1300-1¾	489 (500-1¾)	
CIRCLING	1340-1 527 (600-1)	1440-1 627 (700-1)	1680-2½ 867 (900-2½)	1680-2¾ 867 (900-2¾)	
ELEV 813		TDZE 811			
WATER ALL-WAY: 12000 X 1000		MIRL Rwy 12-30 and 17-35 0 REIL Rwy 30 0			