

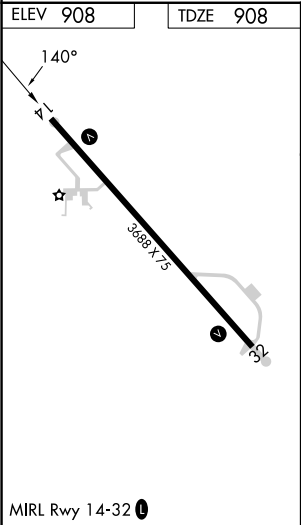
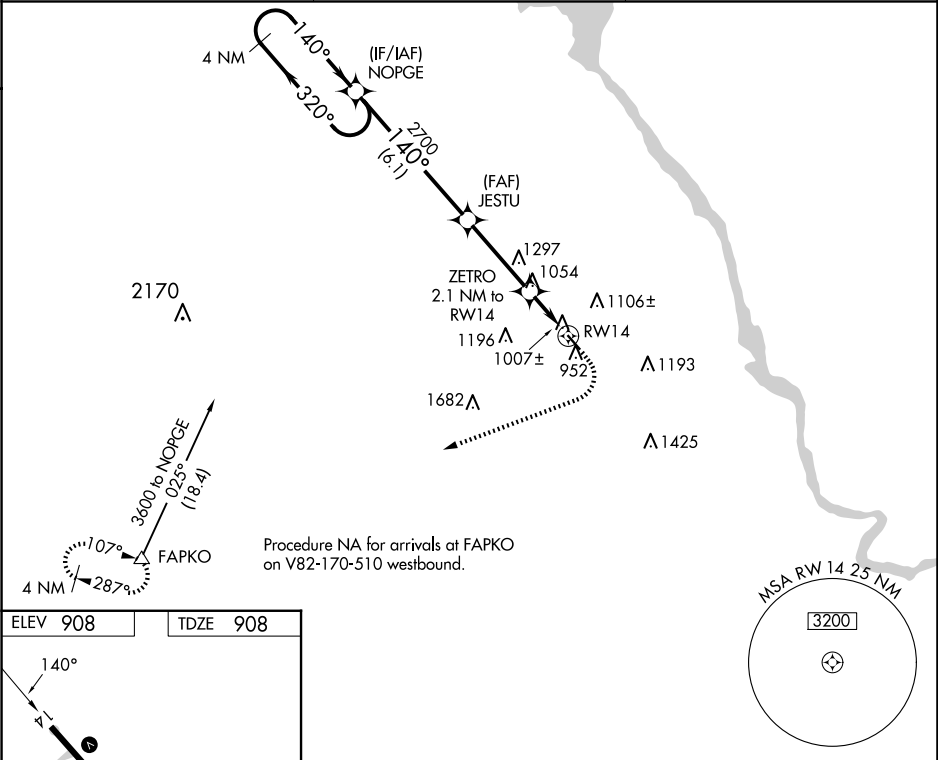
WAAS CH 78329 W14A	APP CRS 140°	Rwy Idg TDZE Apt Elev	3688 908 908
--	------------------------	-----------------------------	---

RNAV (GPS) RWY 14

MAUSTON/NEW LISBON UNION (82C)

RNP APCH.	MISSED APPROACH: Climb to 1500 then climbing right turn to 4000 direct FAPKO and hold.
<div><div>▼</div><div>▲ NA</div></div> <div>Use Volk Field altimeter setting; when not received use Wisconsin Dells altimeter setting and increase all MDA 60 feet and all Cat C visibilities ¼ mile. Procedure NA at night. Helicopter visibility reduction below 1 SM NA.</div>	

AWOS-3 123.925	VOLK APP CON ★ 135.25 244.875	CTAF 122.9 0
--------------------------	---	------------------------



4 NM Holding Pattern		Visual Segment - Obstacles.		1500	4000	FAPKO
NOPGE		JESTU		↑	↷	△
3600 ← 320°		2700		ZETRO 2.1 NM to RW14		RW14
140° →		1620		6.1 NM		3.4 NM
				2.1 NM		
CATEGORY	A	B	C	D		
LP MDA	1280-1 372 (400-1)					NA
LNAV MDA	1340-1 432 (500-1)		1340-1¼ 432 (500-1¼)		NA	