

APP CRS
001°

Rwy Idg
2721

TDZE
919

Apt Elev
919

RNAV (GPS) RWY 36

NECEDAH (DAF)

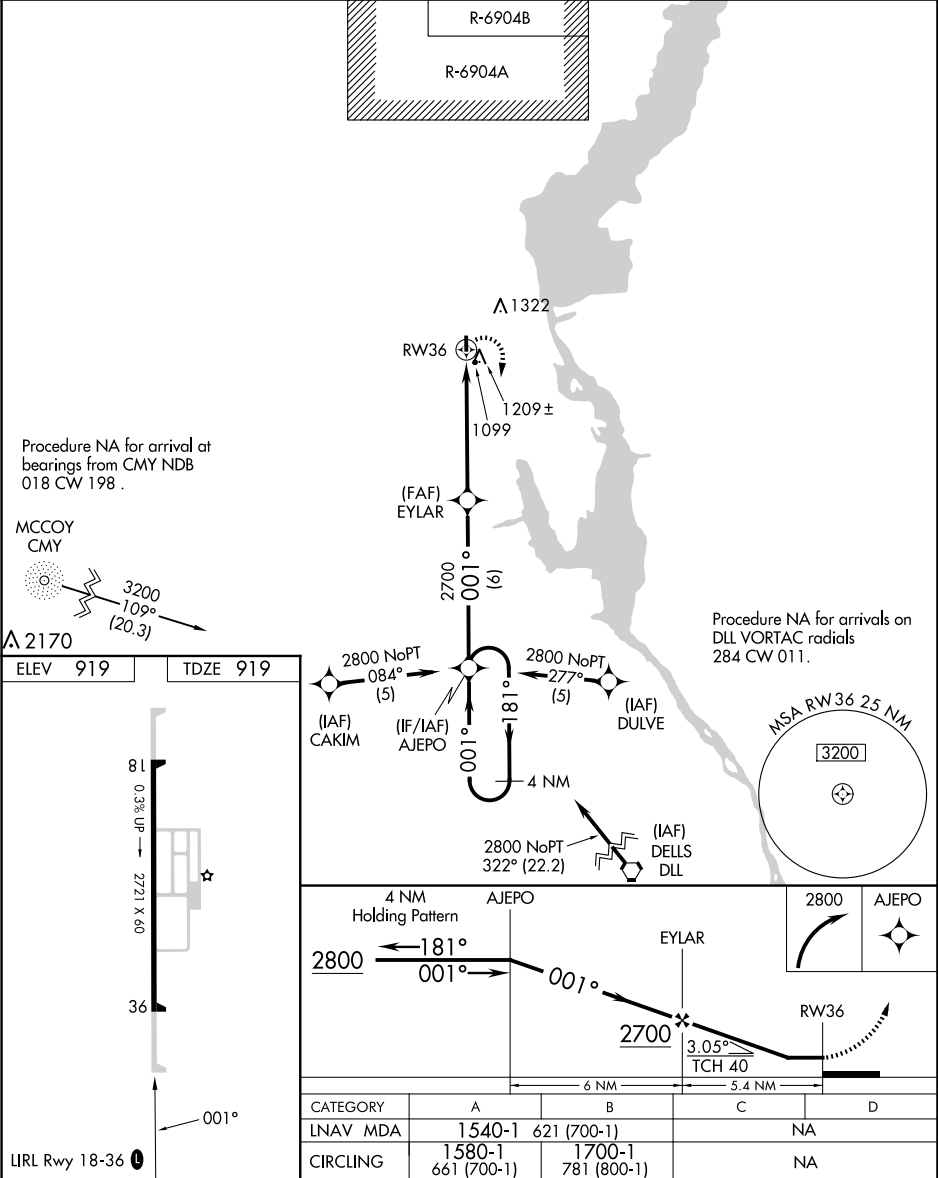
▼

NA

Rwy 36 helicopter visibility reduction below 1 SM NA.
DME/DME-0.3 NA. Procedure NA at night. Use Wisconsin Rapids altimeter setting.

MISSED APPROACH: Climbing right turn to 2800 direct AJEPO and hold.

ISW ASOS 126.575	VOLK APP CON ★ 135.25 244.875	UNICOM 122.7 (CTAF) 0
---------------------	----------------------------------	--------------------------



EC-3, 07 AUG 2025 to 04 SEP 2025

EC-3, 07 AUG 2025 to 04 SEP 2025