

MENOMONIE, WISCONSIN

AL-9006 (FAA)

25163

WAAS CH 97604 W27A	APP CRS 268°	Rwy Ldg 5074 TDZE 894 Apt Elev 895
--	------------------------	---

RNAV (GPS) RWY 27

MENOMONIE MUNI/SCORE FLD (LUM)

RNP APCH.

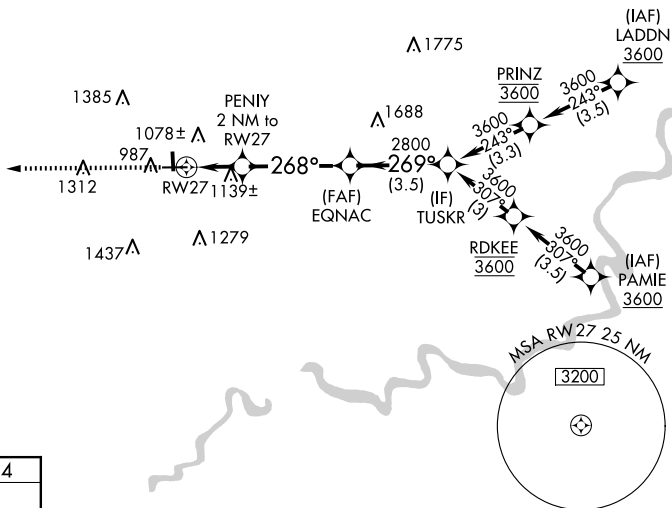
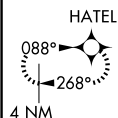


Circling Rwy 18, 36 NA at night.
For uncompensated Baro-VNAV systems,
LNAV/VNAV NA below -16°C or above 54°C.

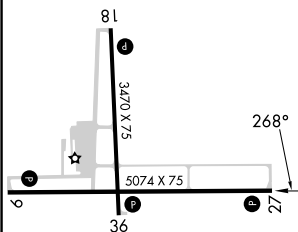
MISSED APPROACH: Climb to 2800 direct HATEL and hold.

AWOS-3 118.025	MINNEAPOLIS CENTER 125.3 335.6	UNICOM 123.075 (CTAF) 0
--------------------------	--	--

Δ 2180



ELEV 895		TDZE 894
----------	--	----------



REIL Rwy 9 and 27 **L**
MIRL Rwy 9-27 and 18-36 **L**

MENOMONIE, WISCONSIN

Amdt 1 20JUN19

MENOMONIE MUNI/SCORE FLD (LUM)

44°54'N-91°52'W

RNAV (GPS) RWY 27

EC-3, 07 AUG 2025 to 04 SEP 2025