

APP CRS	Rwy Ldg	2697
320°	TDZE	763
	Apt Elev	763

RNAV (GPS) RWY 32
EPHRAIM/GIBRALTAR (3D2)

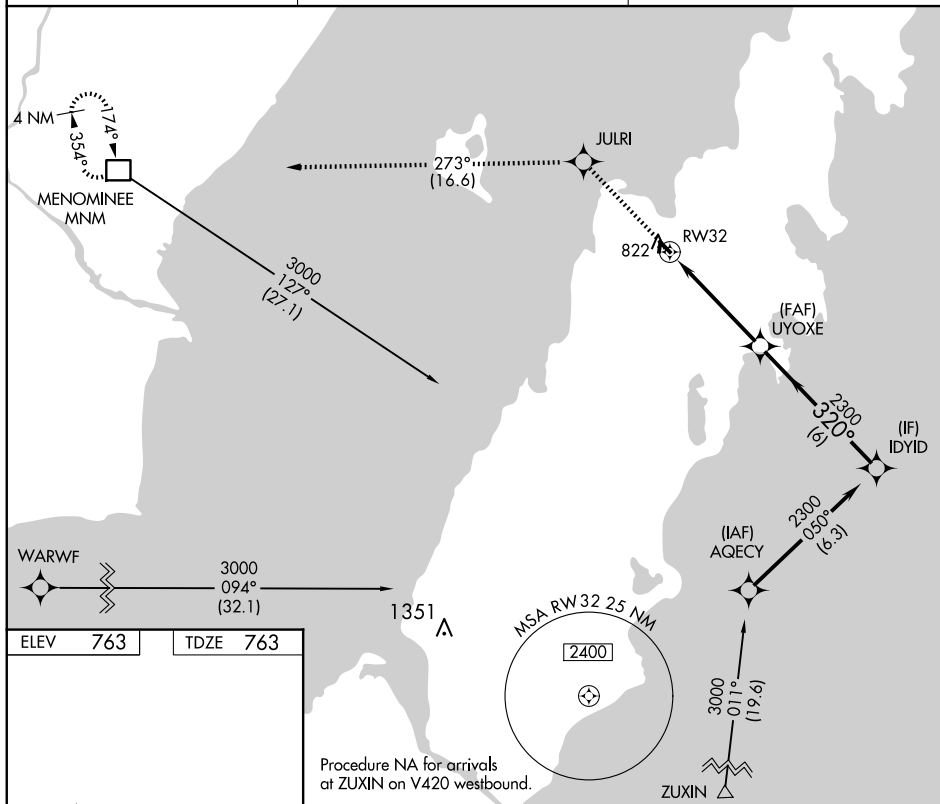
RNP APCH - GPS.	
-----------------	--



Procedure NA at night. Rwy 32 helicopter visibility reduction below $\frac{3}{4}$ SM NA.

MISSED APPROACH: Climb to 3000 direct JULRI and on track 273° to MNM DME and hold.

AWOS-3PT 124.175	GREEN BAY APP CON★ 120.3 338.2	UNICOM 123.0 (CTAF) 0
----------------------------	--	---------------------------------



3000 ↑	JULRI ✦	tr 273°	MNM □	VGS1 and descent angles not coincident (VGS1 Angle 3.00/TCH 25).			
CATEGORY	A		B		C		D
LNNAV MDA	1120-1		357 (400-1)				NA